



FT-8080

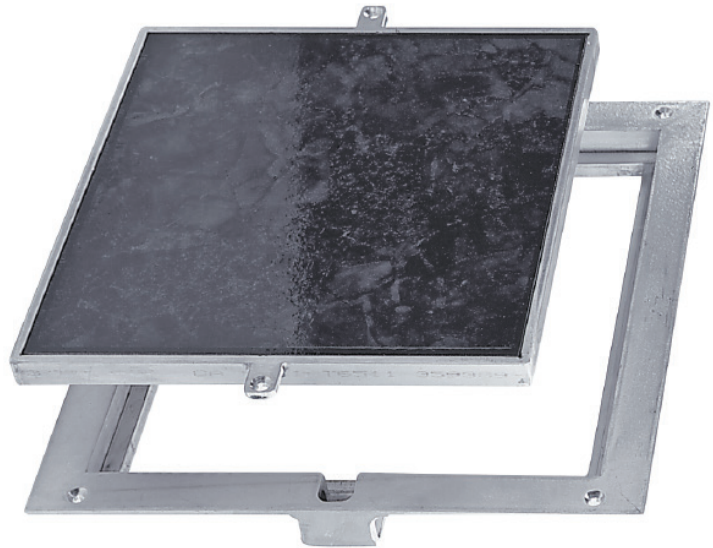
FLOOR DOOR, Non Hinged Panel Recessed 1/8" for Vinyl Tile/Carpet

Application

- Designed for interior and exterior applications that require an access opening that will blend in with the surrounding floor material

Product Features FT-8080 & FT-8080-1

- To keep the floor material from cracking or chipping within the door panel, the securing screws are located in the flange of the mounting frame
- FT-8080: Recessed 1/8" to accommodate carpeting and vinyl tile
- FT-8080-1: Recessed 1" to accommodate ceramic tile/concrete



FT-8080 Floor Door Specifications:

Material: Aluminum

Door FT-8080: 1/4" smooth aluminum plate reinforced for live load of 150 lb/sq. ft., recessed 1/8" for carpet/vinyl tile

Door FT-8080-1: 1/4" smooth aluminum plate reinforced for live loads of 150 lb/sq.ft. / recessed 1" for ceramic tile/concrete

Frame: 1-1/2" x 1-1/4" aluminum angle with mounting holes in top flange

Standard Latch: Door panel is secured to frame with 1/4" x 1" flat head screws

Finish: Mill finish

FT-8080 STANDARD SIZES

(other sizes available upon request)

Nominal Door Size W&H		Weight per Door	
inches	mm	lbs.	kg.
8 x 8	203 x 203	6	3.0
12 x 12	305 x 305	11	5.0
18 x 18	457 x 457	17	8.0
24 x 24	610 x 610	19	9.0

For detailed specifications see submittal sheet

