



DW - 5015 PRODUCT INFORMATION

DW-5015

RECESSED ACCESS DOOR

Application

- For installation in drywall surfaces when it is required to conceal the door panel

Product Features

- Recessed 5/8" to receive drywall
- Door flange is a textured galvanized steel tapping bead with pre-punched holes

DW-5015 Access Door Specifications:

Material: Steel Door 22 gauge,

Mounting Frame: 22 gauge

Door: Recessed 5/8"

Door Frame: Galvanized steel drywall tapping bead on all sides

Hinge: Concealed.

Standard Latch: Slotted Screwdriver Cam Latch

Optional Latches/Locks: Cylinder lock and key, allen head cam latch, spanner head cam latch, torx head with security pin

Finish: Satin coat steel

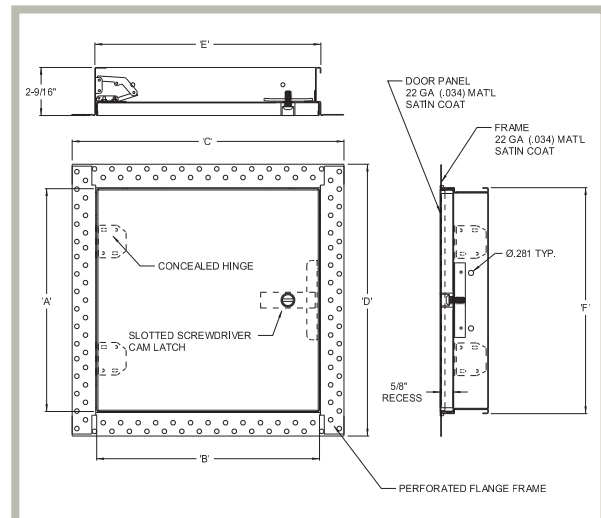


DRYWALL
NOT INCLUDED

DW-5015 STANDARD SIZES *(other sizes available upon request)*

Nominal Door Size W&H		Latches	Weight per Door	
Inches	mm		lbs.	kg.
12 X 12	305 x 305	1	5.20	2.4
16 X 16	406 x 406	1	5.90	2.7
18 X 18	457 X 457	1	8.10	3.7
24 X 24	610 X 610	1	14.50	6.6
24 X 36	610 X 914	2	20.20	9.2

Wall or ceiling opening is W + 3/8" (9 mm)
For detailed specifications see submittal sheet



This document contains proprietary information which is the property of Acudor Products. It shall not be modified, copied, furnished, nor distributed (in whole or in part) without proper authorization. Copyright © 2020 Acudor Products.