



CD-5080-F PRODUCT INFORMATION

# CD-5080-F

## DUCT DOOR for Fiberglass Ducts

### Application

- Economical access to fiberglass ducts

### Product Features

- These doors are for use in low to medium pressure fiberglass ducts
- Double cam - no hinge, removable door panel

### Options:

- Aluminum, stainless steel

### CD-5080-F Duct Access Door Specifications:

Material: Galvanized steel

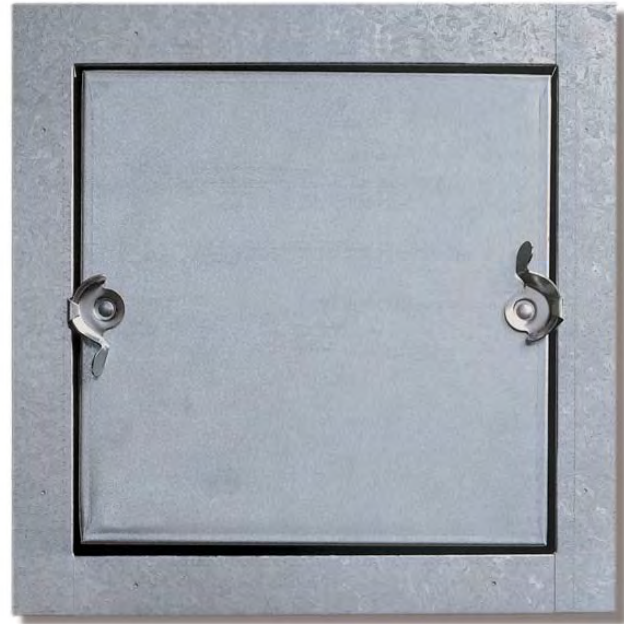
Door: 24 gauge

Mounting Frame: 24 gauge

Gasketing: 1/8" thick by 1/2" wide closed cell neoprene gasketing between door and frame. 1/16" thick by 1 1/2" adhesive bonded gasket between frame and duct

Insulation: 2" of Fiberglass Insulation Compressed to 1" 7.7R Value

Latch: Self tightening, hand operated cam latch

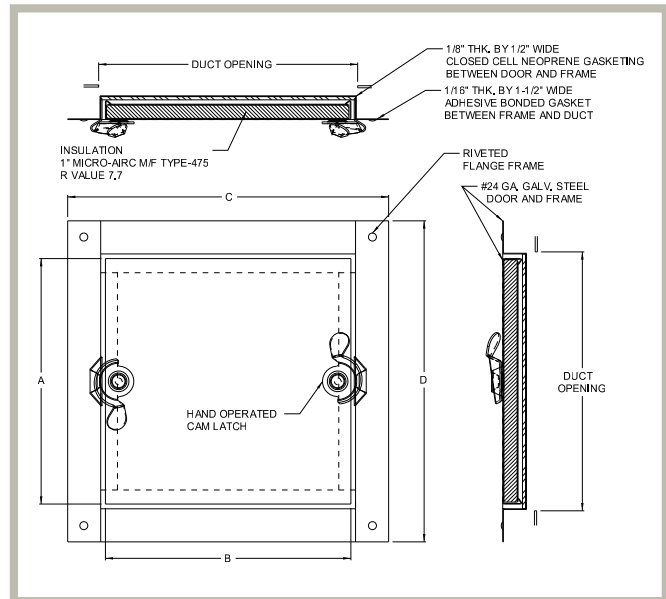


### CD-5080-F STANDARD SIZES

(other sizes available upon request)

Nominal Door Size W&H		Latches	Weight per Door	
Inches	mm		lbs.	kg.
6 x 6	152 x 152	2	1.0	0.5
8 x 8	203 x 203	2	1.25	0.6
10 x 10	254 x 254	2	2.0	0.9
12 x 12	304 x 304	2	2.5	1.1
14 x 14	356 x 356	2	3.25	1.5
16 x 16	406 x 406	2	4.0	1.8
18 x 18	457 x 457	2	5.5	2.5
20 x 20	508 x 508	2	9.0	4.1
24 x 24	610 x 610	2	12.0	5.4

Duct opening is same size as normal door opening  
For detailed specifications see submittal sheet



This document contains proprietary information which is the property of Acudor Products. It shall not be modified, copied, furnished, nor distributed (in whole or in part) without proper authorization. Copyright © 2020 Acudor Products.