

2014



Exterior Insulated Finishes

Section: 07240

Continuous Soffit Vent

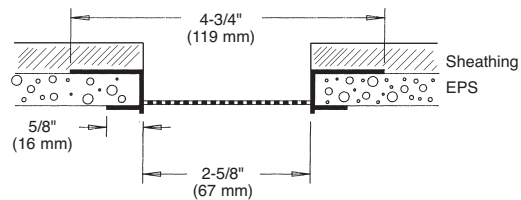
Product Number	For EIFS Applications on 1" and 1-1/2" EPS	Foam Thickness	Pieces Per Box
548-1	14 sq. inches free linear air flow (9,033 mm).	1" (25 mm)	10
548-15		1-1/2" (38 mm)	8

10' (3 m) Lengths – Connector clips included



Application: 548

Designed for use with 1" and 1-1/2" (25 and 38 mm) foam board. Vented area is 2-5/8" (67 mm) wide. **Extra wide** mounting flanges make attachment to sheathing easier. Wide flange has 1/8" (3 mm) stops with striations to provide positive bond of the base coat and mesh assuring proper finish thickness.



Specification:

Surface Mounted Vent will be Plastic Components, Inc. #_____. All exterior accessories shall conform to ASTM standards D1784, C1063 and D4216. All products shall be third party tested to meet ASTM standard D4216 and be Canadian Code Compliant. They shall be used where specified by the architect and installed per industry standards.



D-24

The base coat mesh should be lapped over the top of the perforated flanges and across all butt joints.