

# SUBMITTAL: PANORAMA™ ALUMINUM FIRE EXTINGUISHER CABINETS

The Panorama Cabinet Features a Frameless Door of Clear Polycarbonate or Opaque Textured Acrylic with Many Lettering Options and Optional Anodized Aluminum Finish

**Door & Trim Construction:** No 180 clear anodized aluminum. Flush cabinet doors with a 5/8" door stop are attached by a continuous hinge and equipped with zinc-plated handle and roller catch. All models have 1-3/4" wide trim on frame and 1-1/4" trim on doors with glazing. Rolled edge models are constructed of mechanically-joined extrusions, except for models 1827 and 1027 which are die formed. *Die formed corners provide an attractive, rounded edge - unique to the JL line of cabinets!*

**Trim Style & Depth:** Recessed 3/8" flat trim, Semi Recessed - 1-1/4", 1-1/2" Square Edge or 2-1/2", 3", 4", 4-1/2" Rolled Edge (4" has recessed pull). Surface-mount models have a square edge.

**Tub:** The tub is constructed of cold rolled steel with white powder-coat finish standard. Surface-mount models have aluminum tub.

**Fire-Rated Option Available:** Yes - See separate Submittal Form.

## STEP 1: SELECT MODEL NUMBER, MATERIAL AND QUANTITY ON CHART (refer to chart on pg 2)

A. Determine Trim Style according to wall depth.

B. Determine Tub I.D. according to size most suited for extinguisher and wall opening.

## STEP 2: SELECT DOOR STYLE

(Check one box below)

☐ C70 Clear 3/16" Unlettered Smooth Polycarbonate

☐ P Identity: 3/16" Textured Obscure Acrylic with Lettering

☐ C71 Clear 3/16" Unlettered Smooth Polycarbonate & Saf-T-Lok™

☐ Q Identity: 3/16" Textured Obscure Acrylic with Lettering & Saf-T-Lok™

## STEP 3 - P&Q DOORS SELECT LETTERING STYLE View lettering styles on page 2

<input type="checkbox"/> 40 Vert, Black Bkgd, White Lettering	<input type="checkbox"/> 45 Horiz, Black Bkgd, White Lettering	<input type="checkbox"/> 50 Ascend, Black Bkgd, White Lettering
<input type="checkbox"/> 41 Vert, Red Bkgd, White Lettering	<input type="checkbox"/> 46 Horiz, Red Bkgd, White Lettering	<input type="checkbox"/> 51 Ascend, Red Bkgd, White Lettering
<input type="checkbox"/> 42 Vert, White Bkgd, Black Lettering	<input type="checkbox"/> 47 Horiz, White Bkgd, Black Lettering	<input type="checkbox"/> 52 Ascend, White Bkgd, Black Lettering
<input type="checkbox"/> 43 Vert, White Bkgd, Red Lettering	<input type="checkbox"/> 48 Horiz, White Bkgd, Red Lettering	<input type="checkbox"/> 53 Ascend, White Bkgd, Red Lettering


## STEP 4: OPTIONAL FEATURES AT ADDED COST (SELECT ANY)

- ☐ Futura "Fire" Handle \_\_\_\_ Mill Alum-(PUF) \_\_\_\_ Red \_\_\_\_ White
- ☐ Flush Pull Handle for "P" or "Q" Style Doors Only
- ☐ Polished Chrome Pull (PUCH)
- ☐ Optional Dark Bronze Anodized Color Finish: (with matching pull)

- ☐ (CA) Commander Alarm View Alarms Online
- ☐ (BA) Brigadier Alarm
- ☐ (SA) Strobe Alarm (surface mount)
- ☐ Clear Anodized Aluminum Tub
- ☐ Optional Tub Color: \_\_\_\_ Black \_\_\_\_ Red

For More Information on Options See Other Submittals: Decals & Die Lettering, Wall Signs, Alarms, Pulls & Levers

It is the responsibility of the customer to communicate specifications and product performance requirements that are needed for their application. This document is intended to convey potential product configurations and offerings. It is not to be used to imply or represent a specification or rating, of finished products shipped. Detailed, specific submittals can be created upon request. It is the responsibility of the customer to specify product accordingly to comply with local laws, codes, and ordinances.

 <b>JL INDUSTRIES</b>	Distributor:	Quantity:
	Contractor:	Approved By:
	Model #:	Architect:
	Project:	Date:
<p align="right">© 2025 Activar Construction Products Group, Inc</p>		

PAGE 1 OF 2



1026P40  
Semi-Recessed  
1-1/2" Trim



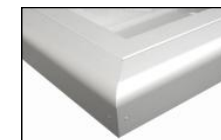
8127Q43  
2-1/2" Rolled Trim  
Semi-Recessed  
With Saf-T-Lok™



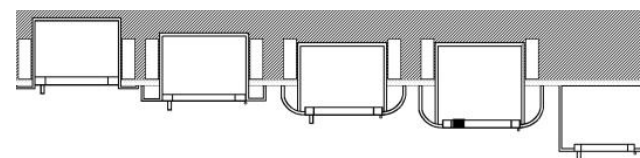
1826C70  
1-1/2" Square  
Trim  
Semi-Recessed



Formed Rolled Edge  
1027 and 1827



Extruded Rolled Edge  
2-1/2", 4" and 4-1/2"



3/8" Flat Trim

1-1/2" Square  
Trim

2-1/2", 3"  
Rolled Edge

4" Rolled w/  
Flush Pull or  
4-1/2" w/Std Pull

Surface  
Mounted

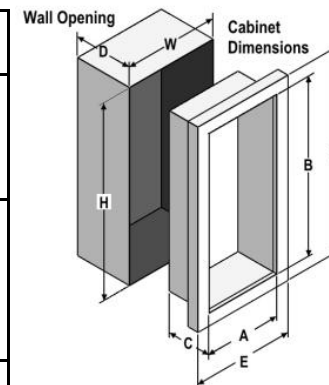
## SUBMITTAL: PANORAMA ALUMINUM FIRE EXTINGUISHER CABINETS

PAGE 2 OF 2

TRIM & DOOR SERIES #			Tub I.D.			Frame O.D.		Wall Opening			Extinguishers Accommodated
QTY	Model	Trim Style (in)	A	B	C	E	F	W	H	D	
	8125	Flat trim •	9	18	5 1/2	12 3/8	21 3/8	10	19	5 3/8	Cosmic & Galaxy 2 1/2-5-1/2 Mercury 2 1/2-5
	8126	1 1/2 Square•	9	18	5 1/2	12 3/8	21 3/8	10	19	4 1/8	
	8127	2 1/2 Rolled•	9	18	5 1/2	12 3/8	21 3/8	10	19	3 3/4	
	8123	Surf. Mtd Sq	12 3/16	21 3/16	6	12 3/8	21 3/8	--	--	--	
	1825	Flat trim •	10 1/2	24	5 1/2	13 7/8	27 3/8	11 1/2	25	5 3/8	Cosmic & Galaxy 2 1/2-5-1/2 Mercury 2 1/2-5
	1826	1 1/2 Square•	10 1/2	24	5 1/2	13 7/8	27 3/8	11 1/2	25	4 1/8	
	1827	3 Rolled•	10 1/2	24	5 1/2	13 7/8	27 3/8	11 1/2	25	2 5/8	
	1822	4 Rolled*(• P or Q)	10 1/2	24	5 1/2	13 7/8	27 3/8	11 1/2	25	2 1/2	
	1828	4 1/2 Rolled	10 1/2	24	5 1/2	13 7/8	27 3/8	11 1/2	25	1 3/4	Cosmic & Galaxy 2 1/2-10 Mercury 2 1/2-5, Sentinel 5
	1025	Flat trim •	10 1/2	24	6	13 7/8	27 3/8	11 1/2	25	5 7/8	
	1026	1 1/2 Square•	10 1/2	24	6	13 7/8	27 3/8	11 1/2	25	4 5/8	
	1027	3 Rolled•	10 1/2	24	6	13 7/8	27 3/8	11 1/2	25	3 1/8	
	1022	4 Rolled*(• P or Q)	10 1/2	24	6	13 7/8	27 3/8	11 1/2	25	3	Any Cosmic. Galaxy, Mercury, Saturn or Grenadier P (20 lb must be mounted on back of tub), Sentinel 5 & 10
	1028	4 1/2 Rolled	10 1/2	24	6	13 7/8	27 3/8	11 1/2	25	2 1/4	
	1023	Surf Mtd. Sq	13 11/16	27 3/16	6 1/2	13 7/8	27 3/8	--	--	--	
	2025	Flat trim •	12	27	7 3/4	15 3/8	30 3/8	13	28	7 5/8	
	2026	1 1/4 Square•	12	27	7 3/4	15 3/8	30 3/8	13	28	6 5/8	Any Cosmic. Galaxy, Mercury, Saturn or Grenadier P (20 lb must be mounted on back of tub), Sentinel 5-15, 272
	2027	2 1/2 Rolled•	12	27	7 3/4	15 3/8	30 3/8	13	28	6	
	2022	4 Rolled*(• P or Q)	12	27	7 3/4	15 3/8	30 3/8	13	28	4 3/4	
	2028	4 1/2 Rolled	12	27	7 3/4	15 3/8	30 3/8	13	28	4	
	2023	Surf Mtd. Sq	15 3/16	30 3/16	8	15 3/8	30 3/8	--	--	--	Two each of: any Cosmic, Galaxy, Mercury, Saturn or Grenadier P (20 lb must be mounted on back of tub), Sentinel 5
	3025	Flat trim •	16	32	7 3/4	19 3/8	35 3/8	17	33	7 5/8	
	3026	1 1/4 Square•	16	32	7 3/4	19 3/8	35 3/8	17	33	6 5/8	
	3027	2 1/2 Rolled•	16	32	7 3/4	19 3/8	35 3/8	17	33	6	
	3022	4 Rolled*(• P or Q)	16	32	7 3/4	19 3/8	35 3/8	17	33	4 3/4	
	3028	4 1/2 Rolled	16	32	7 3/4	19 3/8	35 3/8	17	33	4	
	3023	Surf Mtd. Sq	19 3/16	35 3/16	8	19 3/8	35 3/8	--	--	--	
	4025	Flat trim •	20	27	7 3/4	23 3/8	30 3/8	21	28	7 5/8	
	4026	1 1/4 Square•	20	27	7 3/4	23 3/8	30 3/8	21	28	6 5/8	
	4027	2 1/2 Rolled•	20	27	7 3/4	23 3/8	30 3/8	21	28	6	
	4022	4 Rolled*(• P or Q)	20	27	7 3/4	23 3/8	30 3/8	21	28	4 3/4	
	4028	4 1/2 Rolled	20	27	7 3/4	23 3/8	30 3/8	21	28	4	
	4023	Surf Mtd. Sq	23 3/16	30 3/16	8	23 3/8	30 3/8	--	--	--	

\* 4" Rolled models have recessed pull for P and Q Doors and standard pull for C Styles

• Meets ADA Cabinet Projection Requirements



**ADA Cabinet Mounting**  
**Height:** Standard Pull on G, E, W, L22 and B Door Styles with Saf-T-Lok are 3 5/8" Higher than Door Center, so Allow for that When Mounting Cabinet.  
 Standard Pull with No Lock or Recessed Pull are Centered on Door.

PANORAMA "P" & "Q" DOOR GLAZING STYLES

