

## SUBMITTAL: AMBASSADOR™ STEEL FIRE-FX2™ FIRE-RATED EXTINGUISHER CABINETS

The Ambassador Series is a Durable, Attractive Steel Cabinet with Powder-coat Finish that Stands up to Conditions in Commercial Buildings.

**Door & Trim Construction:** Cold rolled steel with white powder-coated finish standard. Flush cabinet doors with a 5/8" door stop are attached by a continuous hinge and equipped with zinc-plated handle and roller catch. All models have 1-3/4" wide trim on frame and 1-1/4" trim on doors with glazing.

**Trim Style & Depth:** Recessed 3/8" flat trim, Semi Recessed - 1-1/4", 1-1/2" Square Edge or 2-1/2", 3", 4" (w/Flush Pull), 4-1/2" Rolled Edge. Trimless Recessed -See separate submittal.

**Tub:** The tub is constructed of cold rolled steel with white powder-coat finish standard. Tub forms a flange to cover cut edges of wallboard material. Fire-

*Fire Rating: Fire-FX2™ cabinets are UL listed and labeled as an approved membrane penetration firestop system for up to 2 hours in accordance with UL 1479 (ASTM-E814) and CAN/ULC-S115, when properly installed in a wall assembly according to installation instructions.*

### STEP 1: SELECT MODEL NUMBER AND QUANTITY ON CHART (refer to chart on pg 2)

A. Determine Trim Style according to wall depth. B. Determine Tub I.D. according to size most suited for extinguisher and wall opening.

### STEP 2: SELECT DOOR STYLE WITH HANDLE

- ☐ F Full Glazing  
☐ G Full Glazing with SAF-T-LOK  
☐ D Horizontal Duo Panel  
☐ E Horizontal Dual Panel with SAF-T-LOK  
☐ S21 Solid Door

Check one box below - See Examples on Page 2

- ☐ L22 Solid with SAF-T-LOK  
☐ L24 Solid with Cylinder Lock - No Handle  
☐ V Vertical Duo  
☐ W Vertical Duo with SAF-T-LOK  
☐ B Solid with 2" x 4" View Window & SAF-T-LOK

(Check one box below)

### STEP 3: SELECT DOOR GLAZING

- ☐ 10 Clear Acrylic  
☐ 13 Clear Wire Glass with Safety Film  
☐ 15 Bronze Acrylic  
☐ 16 Gray Acrylic  
☐ 17 Clear Tempered Glass  
☐ 18 Laminated Safety Glass

### STEP 4: OPTIONAL FEATURES AT ADDED COST (SELECT ANY)

- ☐ Optional Tub Color: \_\_\_ Black \_\_\_ Red  
☐ Futura "Fire" Pull \_\_\_ Mill Alum \_\_\_ Red \_\_\_ White  
☐ Flush Pull Handle (PRH)  
☐ Polished Chrome Pull (PUCH)  
☐ Optional Colors: \_\_\_ Red \_\_\_ Black \_\_\_ Flat Black  
\_\_\_ Sand \_\_\_ AMS Beige \_\_\_ SC Flat Beige  
\_\_\_ Gray \_\_\_ Bronze \_\_\_ Silver
- ☐ Black Vertical FE Letters LDCVBFE  
☐ Red Vertical FE Letters LDCVRFE  
☐ White Vertical FE Letters LDCVWFE  
☐ Black Horizontal FE Letters LDCHBFE  
☐ Red Horizontal FE Letters LDCHRFE  
☐ White Horizontal FE Letters LDCHWFE
- ☐ Black Vertical Decal LDVBFE  
☐ Red Vertical Decal LDVRFE  
☐ White Vertical Decal LDVWFE  
☐ Black Horizontal Decal LDHBFE  
☐ Red Horizontal Decal LDHRFE  
☐ White Horizontal Decal LDHWFE
- ☐ (MC) Magnetic Catch—Replaces Roller Catch  
☐ (CA) Commander Alarm  
☐ (BA) Brigadier Alarm  
☐ Etched/Engraved Letters in Glass/ Metal - attach separate submittal

It is the responsibility of the customer to communicate specifications and product performance requirements that are needed for their application. This document is intended to convey potential product configurations and offerings. It is not to be used to imply or represent a specification or rating, of finished products shipped. Detailed, specific submittals can be created upon request. It is the responsibility of the customer to specify product accordingly to comply with local laws, codes, and ordinances.



Distributor:	Quantity:
Contractor:	Approved By:
Model #:	Architect:
Project:	Date:

5/31/23

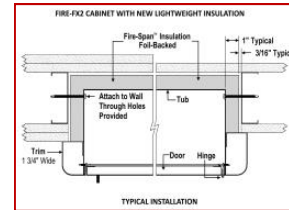
PAGE 1 OF 2



1017V10FX2  
3" Rolled Trim



8116F10FX2  
1-1/2" Square Trim



## SUBMITTAL: AMBASSADOR FIRE-FX2 FIRE-RATED EXTINGUISHER CABINETS

PG 2 OF 2

TRIM & DOOR SERIES #			Tub I.D.			Frame O.D.		FX Wall Opening			Fits Extinguishers
QTY	Model	Trim Style	A	B	C	E	F	W	H	D	
	8115	Flat 3/8" Trim •	9	18	5 1/2	12 3/8	21 3/8	11 5/16	20 5/16	6 7/16	Cosmic & Galaxy 2 1/2-6 (6 lb must be mounted to tub back) Mercury 2 1/2 & 5
	8116	1 1/2 Square •	9	18	5 1/2	12 3/8	21 3/8	11 5/16	20 5/16	5 3/16	
	8117	2 1/2 Rolled •	9	18	5 1/2	12 3/8	21 3/8	11 5/16	20 5/16	4	
	1710	2-1/4 Square •	10 1/2	24	5	13 7/8	27 3/8	12 13/16	26 5/16	4	Cosmic/Gal/Merc 2-5
	1815	Flat 3/8" Trim •	10 1/2	24	5 1/2	13 7/8	27 3/8	12 13/16	26 5/16	6 7/16	
	1816	1 1/2 Square •	10 1/2	24	5 1/2	13 7/8	27 3/8	12 13/16	26 5/16	5 3/16	
	1817	3 Rolled •	10 1/2	24	5 1/2	13 7/8	27 3/8	12 13/16	26 5/16	3 11/16	Cosmic & Galaxy 2 1/2-6 (6lb must be mounted to tub back) Mercury 2 1/2-5
	1812	4 Rolled/Flush Pull •	10 1/2	24	5 1/2	13 7/8	27 3/8	12 13/16	26 5/16	2 7/8	
	1818	4 1/2 Rolled	10 1/2	24	5 1/2	13 7/8	27 3/8	12 13/16	26 5/16	2 3/16	
	1015	Flat 3/8" Trim •	10 1/2	24	6	13 7/8	27 3/8	12 13/16	26 5/16	6 15/16	Cosmic & Galaxy 2 1/2 - 10 Sentinel 5 Mercury 2 1/2, 5
	1016	1 1/2 Square •	10 1/2	24	6	13 7/8	27 3/8	12 13/16	26 5/16	5 11/16	
	1017	3 Rolled •	10 1/2	24	6	13 7/8	27 3/8	12 13/16	26 5/16	4	
	1012	4 Rolled/Flush Pull •	10 1/2	24	6	13 7/8	27 3/8	12 13/16	26 5/16	3 3/8	
	1018	4 1/2 Rolled	10 1/2	24	6	13 7/8	27 3/8	12 13/16	26 5/16	2 11/16	
	2015	Flat 3/8" Trim •	12	27	7 3/4	15 3/8	30 3/8	14 5/16	29 5/16	8 11/16	Any Cosmic or Galaxy (20 lb must be mounted to back of tub), Mercury, Saturn or Grenadier P, Sentinel 5 & 10, Nebula 270
	2016	1 1/4 Square •	12	27	7 3/4	15 3/8	30 3/8	14 5/16	29 5/16	7 11/16	
	2017	2 1/2 Rolled •	12	27	7 3/4	15 3/8	30 3/8	14 5/16	29 5/16	6 7/16	
	2012	4 Rolled/Flush Pull •	12	27	7 3/4	15 3/8	30 3/8	14 5/16	29 5/16	5 1/8	
	2018	4 1/2 Rolled	12	27	7 3/4	15 3/8	30 3/8	14 5/16	29 5/16	4 7/16	
	3015	Flat 3/8" Trim •	16	32	7 3/4	19 3/8	35 3/8	18 5/16	34 5/16	8 11/16	Any Cosmic or Galaxy (20 lb must be mounted to back of tub), Mercury, Saturn or Grenadier P, Sentinel 5-15, Nebula 270, 272, 250
	3016	1 1/4 Square •	16	32	7 3/4	19 3/8	35 3/8	18 5/16	34 5/16	7 11/16	
	3017	2 1/2 Rolled •	16	32	7 3/4	19 3/8	35 3/8	18 5/16	34 5/16	6 7/16	
	3012	4 Rolled/Flush Pull •	16	32	7 3/4	19 3/8	35 3/8	18 5/16	34 5/16	5 1/8	
	3018	4 1/2 Rolled	16	32	7 3/4	19 3/8	35 3/8	18 5/16	34 5/16	4 7/16	
	4015	Flat 3/8" Trim •	20	27	7 3/4	23 3/8	30 3/8	22 5/16	29 5/16	8 11/16	Any Cosmic or Galaxy (20 lb must be mounted to tub back), Mercury, Saturn or Grenadier P, Sentinel 5-15, 272
	4016	1 1/4 Square •	20	27	7 3/4	23 3/8	30 3/8	22 5/16	29 5/16	7 11/16	
	4017	2 1/2 Rolled •	20	27	7 3/4	23 3/8	30 3/8	22 5/16	29 5/16	6 7/16	
	4012	4 Rolled/Flush Pull •	20	27	7 3/4	23 3/8	30 3/8	22 5/16	29 5/16	5 1/8	
	4018	4 1/2 Rolled	20	27	7 3/4	23 3/8	30 3/8	22 5/16	29 5/16	4 7/16	

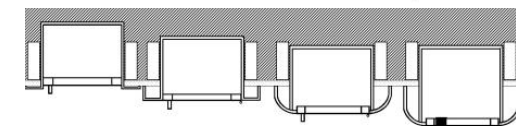
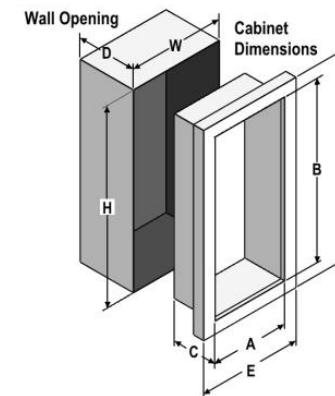
• Cabinets meet ADA 4" Projection Guidelines

All dimensions above shown in inches

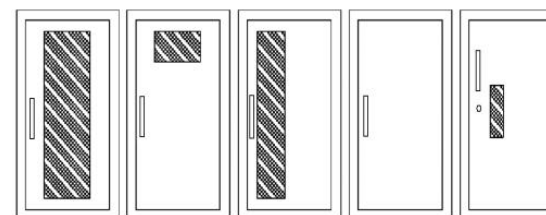
See website for items that are available on our stock list.



Lightweight Insulation



3/8" Flat Trim 1-1/2" Square Trim 2-1/2", 3" Rolled Edge 4" Rolled with Flush Pull or 4-1/2" with Standard Pull


F - Full glass with pull handle  
G - Full glass with pull handle above Saf-T-Lok (not shown)  
D - Horizontal duo panel with pull handle  
E - Horizontal duo panel with pull handle above Saf-T-Lok (not shown)  
V - Vertical duo panel with pull handle  
W - Vertical duo panel with pull handle above Saf-T-Lok (not shown)  
S21 - Solid with pull handle  
L22 - Solid with pull handle above Saf-T-Lok  
L24 - Solid with cylinder key lock and no handle  
B - Small view window with pull handle, and Saf-T-Lok

ADA Cabinet Mounting Height: Standard Pull on G, E, W, L22 and B Door Styles with Saf-T-Lok are 3 5/8" Higher than Door Center, so Allow for that When Mounting Cabinet. Standard Pull with No Lock or Flush Pull are Centered on Door.