

# Drywall Accessories

Section: 09260

## Reverse "L" Bead

Product Number	Dimensions/Descriptions	Pieces per Box
210	Fillable mudding flange, and extra wide return flange eliminate taping where vertical and horizontal planes meet. Perfect for remodeling.	40

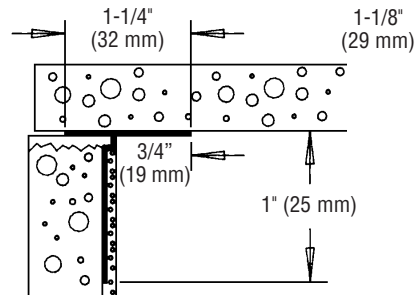
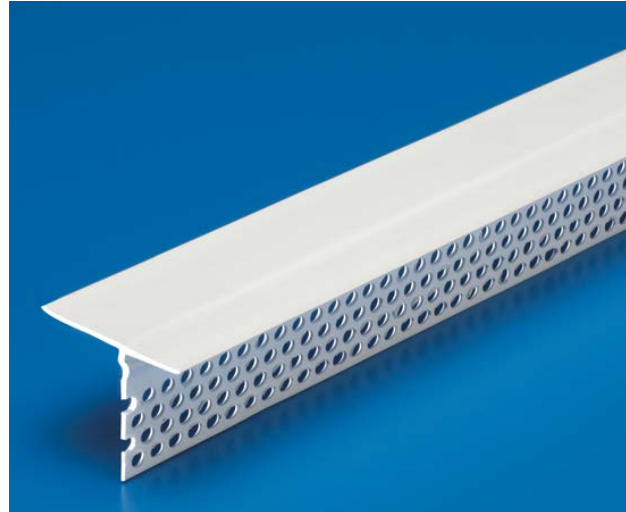
10' (3 m) Lengths

### Application:

Fillable mudding flange and extra wide return flange eliminate the need to tape where vertical and horizontal planes meet. Perfect product for remodeling.

### Specifications:

Reverse "L" Bead shall be Plastic Components Inc. #210. All drywall accessories shall conform to ASTM standards D3678 and C1047. All products shall be third party tested to meet ASTM standard D4216 and be Canadian Code Compliant. Finish compatible with drywall mud and all paint finishes. They shall be used where specified by the design authority and installed per industry standards.



C-17