

2022

CI/EIFS/Hard Coat

Section: 07240

PCDBVME1W
with fixed
flange

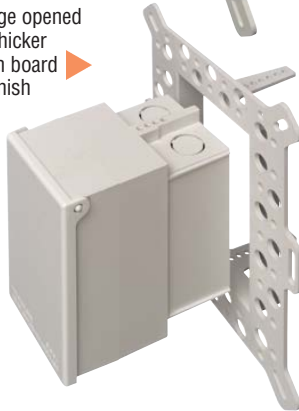


PCDBVMA1W
with
adjustable
flange

Flange
in position
for thin
foam
or finish
thickness



Flange opened
for thicker
foam board
or finish



Low Profile, Recessed Electrical Box

Product Number	Dimensions/Description	Flange Style	Cover Color	Pcs per Box
PCDBVME1C	IN BOX® Electrical box for 1-1/2" (38 mm) EIFS and DEFS foam wall systems.	Fixed	Clear	4
PCDBVME1W		Fixed	White	4
PCDBVMA1C	For EIFS and DEFS foam wall systems up to 2" (51 mm) thick.	Adjustable	Clear	4
PCDBVMA1W		Adjustable	White	4

Patented - Arlington Industries, Inc.

Arlington Industries' IN BOX® for EIFS and DEFS is now available from Plastic Components! These one-piece electrical boxes save labor time, and because IN BOX installs in the wall, you'll get a great-looking job too. The cover protrudes from the wall just enough to provide a neat, clean appearance.

The fixed-flashing style IN BOX offers superior moisture control in 1-1/2" foam wall systems. It has a large, built-in flange that eliminates the need for a separate flashing.



For 1-1/2" thick foam board



For foam board up to 2" (51 mm) thick



The **adjustable flange** style adjusts to fit any foam board thickness or custom finish in concrete block and stucco applications.

For finishes 1/4" (6 mm) to 2-1/2" (64 mm) thick on walls 2-3/4" (70 mm) to 5" (127 mm) deep.

Application

Offers aesthetic value as a low profile, non-metallic electrical box that installs IN the wall. The cover protrudes approximately 3/4" (19 mm) from the surface of the wall, depending on the thickness of the stucco finish.

Specifications

Non-metallic electrical box shall be Plastic Components, Inc. IN-BOX® #_____. Made of UV rated, PVC material. UL and CSA Listed.



Shipped-in-place disposable mud cover



The base coat mesh should be lapped over the top of the perforated flanges and across all butt joints.



D-36