

RODENHOUSE



Fastening Systems

**GRIP-PLATE®**

LATH & PLASTER WASHER

## Lath or Gypsum Sheathing Attachment

## Galvanized Steel



### GRIP-PLATE® LATH & PLASTER WASHER

1 1/4" galvanized steel washer. Use with Grip-Lok® Autofeed Fastening System for rapid attachment



### FOR PINS OR SCREWS

Small center hole for shot-in pins or large center hole for Grip-Deck® screws.



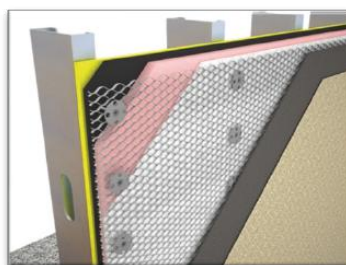
## GRIP-PLATE®

### LATH & PLASTER WASHER



\*Use with Grip-Lok®  
Autofeed Fastening System  
with Bullseye® nose adaptor

- Attaches: -Lath
- Exterior gypsum sheathing
- Plaster & stucco repair
- 1 1/4" diameter galvanized steel
- Large center hole version available for screws, small center hole available for use with pins
- Keyholes for bonding of basecoat / plaster
- Made in USA



\*patented or patent pending

