



FD-8060

FLOOR DOOR Non Hinged, Flush Diamond Plate

Application

- Designed for interior and exterior applications that require an access opening that will blend in with the surrounding floor material

Product Features

- Flush Diamond Plate door panel
- Door panel removable via screws

FD-8060 Floor Door Specifications:

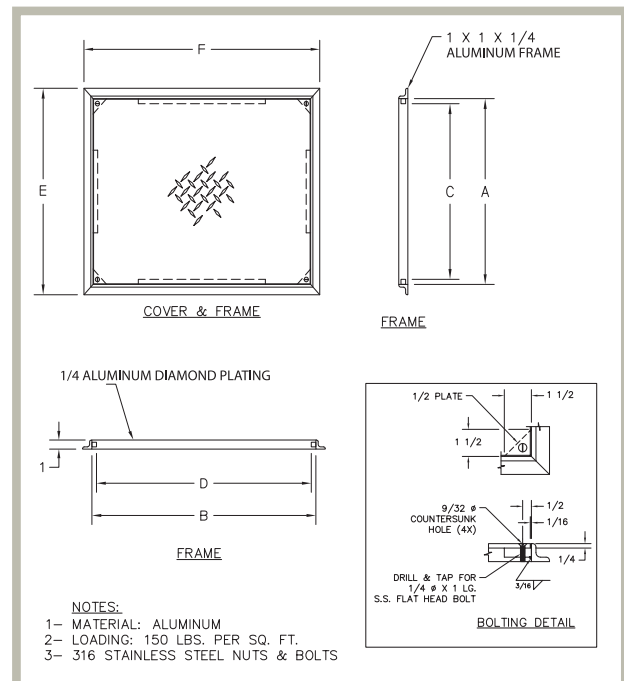
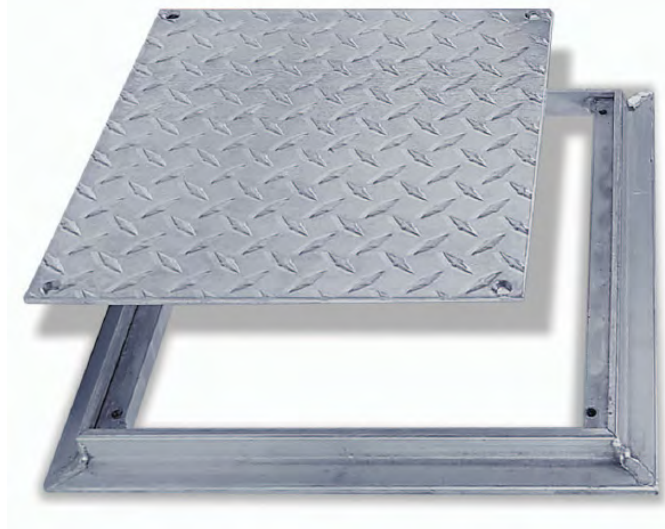
Material: Aluminum

Door: 1/4" aluminum diamond plate reinforced for the live load of 150 lb/per sq. ft.

Frame: 1" x 1" aluminum angle designed to be cast into concrete

Standard Latch: Door panel is secured to frame with 1/4" x 1" flat head screws

Finish: Mill finish



FD-8060 STANDARD SIZES

(other sizes available upon request)

Nominal Door Size W&H		Weight per Door	
inches	mm	lbs.	kg.
8 x 8	203 x 203	5	2.0
12 x 12	305 x 305	7	3.0
18 x 18	457 x 457	13	6.0
24 x 24	610 x 610	20	9.0

For detailed specifications see submittal sheet

This document contains proprietary information which is the property of Acudor Products. It shall not be modified, copied, furnished, nor distributed (in whole or in part) without proper authorization. Copyright © 2020 Acudor Products.