

2022

Stucco and Plaster

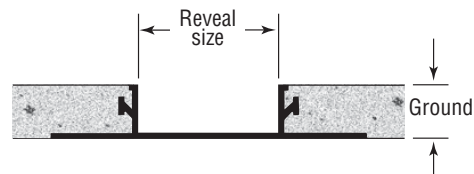
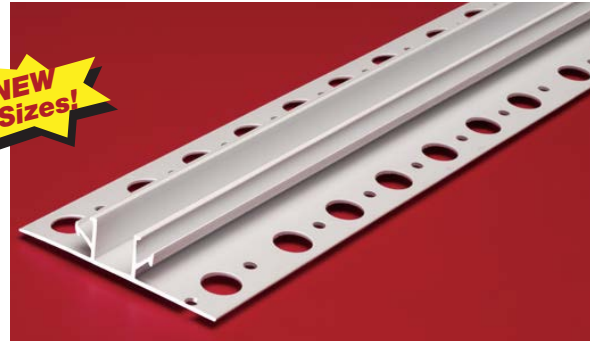
Section: 09200

ULTRA-TRAC™ Aesthetic Stucco Channel Reveal

Product Number	Reveal Size	Ground	Pieces per Box
707-25	1/2" (13 mm)	1/4" (6 mm)	35
707-38	1/2" (13 mm)	3/8" (10 mm)	35
707-50	1/2" (13 mm)	1/2" (13 mm)	35
707-58	1/2" (13 mm)	5/8" (16 mm)	35
707-75	1/2" (13 mm)	3/4" (19 mm)	30
707-78	1/2" (13 mm)	7/8" (22 mm)	30
708-25	3/4" (19 mm)	1/4" (6 mm)	50
708-38	3/4" (19 mm)	3/8" (10 mm)	35
708-50	3/4" (19 mm)	1/2" (13 mm)	35
708-58	3/4" (19 mm)	5/8" (16 mm)	30
708-75	3/4" (19 mm)	3/4" (19 mm)	30
708-78	3/4" (19 mm)	7/8" (22 mm)	30
709-25	1" (25 mm)	1/4" (6 mm)	50
709-38	1" (25 mm)	3/8" (10 mm)	35
709-50	1" (25 mm)	1/2" (13 mm)	20
709-58	1" (25 mm)	5/8" (16 mm)	20
709-75	1" (25 mm)	3/4" (19 mm)	20
709-78	1" (25 mm)	7/8" (22 mm)	20
710-25	1-1/2" (38 mm)	1/4" (6 mm)	50
710-38	1-1/2" (38 mm)	3/8" (10 mm)	35
710-50	1-1/2" (38 mm)	1/2" (13 mm)	20
710-58	1-1/2" (38 mm)	5/8" (16 mm)	20
710-75	1-1/2" (38 mm)	3/4" (19 mm)	20
710-78	1-1/2" (38 mm)	7/8" (22 mm)	20

10' (3 m) Lengths
Connector clips included

**NEW
Sizes!**



Removable caps available upon request
on all except 1/4" (6 mm), 3" (76 mm)
and 4" (102 mm) ground reveal series

Please check with customer service for price and delivery information.

We recommend Plastic Components' trims and accessories on all projects using the ULTRA-TRAC™ system.



Application:

Designed for aesthetic use only. Can be used to form patterns and reliefs in walls. Should not be used as an expansion joint. Excellent paint adhesion. "Eyebrows" assure positive keying of the stucco to the reveal leg. Connector clips included. Should be used for caulk base.

Specifications

Plaster Reveals shall be Plastic Components, Inc. # _____. All exterior accessories shall be of PVC material conforming to ASTM standards D1784, C1063, C1861 and D4216. They shall be used where specified by the design authority and installed per industry standards.

Product series continues on next page.



PLASTIC PC™
COMPONENTS inc.

A-35

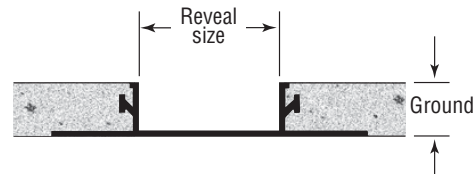
Stucco and Plaster

Section: 09200

ULTRA-TRAC™ Aesthetic Stucco Channel Reveal (cont'd.)

Product Number	Reveal Size	Ground	Pieces per Box
711-25	2" (51 mm)	1/4" (6 mm)	40
711-38	2" (51 mm)	3/8" (10 mm)	35
711-50	2" (51 mm)	1/2" (13 mm)	20
711-58	2" (51 mm)	5/8" (16 mm)	20
711-75	2" (51 mm)	3/4" (19 mm)	20
712-50	2-1/2" (64 mm)	1/2" (13 mm)	13
712-58	2-1/2" (64 mm)	5/8" (16 mm)	13
712-75	2-1/2" (64 mm)	3/4" (19 mm)	13
713-50	3" (76 mm)	1/2" (13 mm)	13
713-58	3" (76 mm)	5/8" (16 mm)	13
713-75	3" (76 mm)	3/4" (19 mm)	13
714-50	4" (102 mm)	1/2" (13 mm)	13
714-58	4" (102 mm)	5/8" (16 mm)	13
714-75	4" (102 mm)	3/4" (19 mm)	13
714-78	4" (102 mm)	7/8" (22 mm)	13

10' (3 m) Lengths
Connector clips included



Removable caps available upon request
 on all except 1/4" (6 mm), 3" (76 mm)
 and 4" (102 mm) ground reveal series
 Please check with customer service for price
 and delivery information.

We recommend Plastic Components' trims and accessories
 on all projects using the ULTRA-TRAC™ system.

Application:

Designed for aesthetic use only. Can be used to form patterns and reliefs in walls. Should not be used as an expansion joint. Excellent paint adhesion. "Eyebrows" assure positive keying of the stucco to the reveal leg. Connector clips included. Should be used for caulk base.

Specifications:

Plaster Reveals shall be Plastic Components, Inc. #_____. All exterior accessories shall be of PVC material conforming to ASTM standards D1784, C1063, C1861 and D4216. They shall be used where specified by the design authority and installed per industry standards.

Product series continued from previous page.



305.885.0561 ■ 800.327.7077
www.plasticcomponents.com