

2022

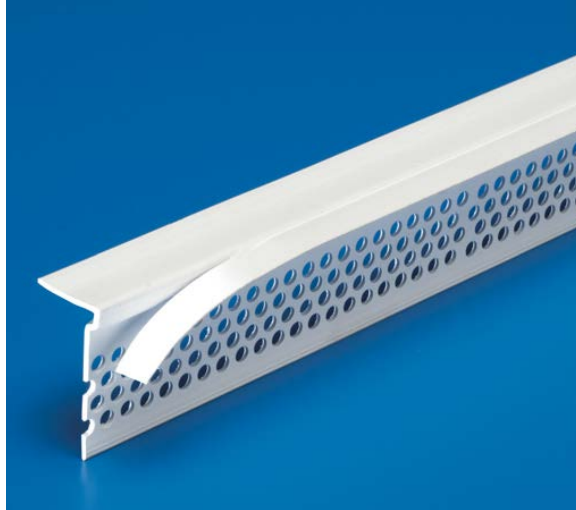
# Drywall Accessories

Section: 09260

## Trim Tab

Product Number	Dimensions/Descriptions	Board Thickness	Pieces per Box
224	1-1/16" (27 mm) perforated flange.	1/2" (13 mm)	50
224-58		5/8" (16 mm)	50

10' (3 m) Lengths

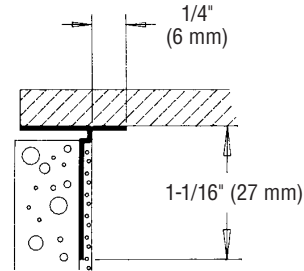


### Application

To be used where a wall joins a suspended ceiling, window or door frame. Tear away tab eliminates the need for costly masking and provides clean detail.

### Specifications:

Trim Tab shall be Plastic Components Inc. # \_\_\_\_\_.  
 All drywall accessories shall conform to ASTM standards D3678 and C1047. All products shall be third party tested to meet ASTM standard D4216 and be Canadian Code Compliant. Finish compatible with drywall mud and all paint finishes. They shall be used where specified by the design authority and installed per industry standards.



**PLASTIC PC**™  
**COMPONENTS inc.**

C-16

305.885.0561 ■ 800.327.7077  
[www.plasticcomponents.com](http://www.plasticcomponents.com)