

**SUBMITTAL: CROWLINE™ FIRE-FX2™ VALVE & HOSE CABINETS - ALUMINUM PAGE 1 OF 2**

**Crowline Cabinets Provide A Wide Selection of Door Styles, Glazing and Sizes. These Durable Cabinets are Designed to Industry Standards for Fire Department Valves, Fire Hose Rack Units and Extinguishers.**

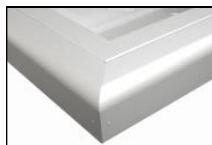
**Door & Trim:** Clear anodized aluminum. 1-3/4" Trim on face and door. These flush cabinet doors are mounted in a 5/8" door stop, are attached by a continuous hinge and are equipped with zinc-plated handle and roller catch for all non-locking doors. Theft-deterrent SAF-T-LOK™ also available.

**Trim Style and Depth:** 1-3/4" face trim on frame and 1-1/4" trim on door. *Recessed* - 3/8" flat trim. *Semi-recessed* - 1-1/4" Square Edge or 2-1/2" Rolled Edge. Rolled edge models are constructed of mechanically-joined extrusions (see photo). See separate submittal for trimless.

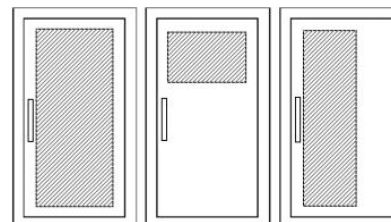
**Tub:** CRS, white powder-coat finish standard.

**Knockouts:** Knockouts are not provided on Fire-Rated Cabinets. Instructions for Knockouts in the field are provided and must be strictly adhered to, to maintain fire rating.

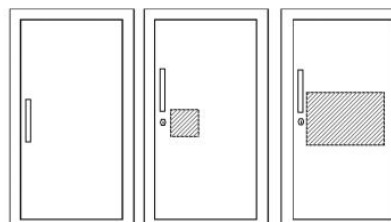
**Special Features:** Models 8025, 8026 and 8027 have a shelf 12" from the bottom of the cabinet and are designed to hold a fire extinguisher plus FD valve or other accessory. Those models can also be ordered without shelf to allow for lower mounting height of valve piping to meet NFPA14.



2-1/2" Rolled Edge



F - Full glass with pull  
G - Full glass with pull handle and Saf-T-Lok (Not Shown)  
D - Horizontal duo panel with pull  
E - Horizontal duo panel with pull and Saf-T-Lok. (Not Shown)  
V - Vertical duo panel with pull  
W - Vertical duo panel with pull and Saf-T-Lok. (Not Shown)



S21 - Solid with pull  
L22 - Solid with pull and Saf-T-Lok  
L24 - Solid with cylinder key lock/no pull (L22,24 not shown)  
B10 - Acrylic view window with pull, and Saf-T-Lok  
A - Center duo panel with pull and Saf-T-Lok

*Fire Rating: Fire-FX2™ cabinets are UL listed and labeled as an approved membrane penetration firestop system for up to 2 hours in accordance with UL 1479 (ASTM-E814) and CAN/ULC-S115, when properly installed in a wall assembly according to installation instructions.*

**STEP 1: SELECT MODEL NUMBER, TRIM & QUANTITY (Refer to Chart on Page 2)**

**STEP 2: SELECT DOOR STYLE**

(Check one box below)

- F** Full Glazing
- G** Full Glazing with SAF-T-LOK
- D** Horizontal Duo Panel
- E** Horizontal Duo Panel with SAF-T-LOK
- A** Center Duo Panel with SAF-T-LOK
- S21** Solid Door

- L22** Solid with SAF-T-LOK
- V** Vertical Duo
- W** Vertical Duo with SAF-T-LOK
- B10** Acrylic View Window with SAF-T-LOK
- L24** Solid with Cylinder Lock & No Handle

View Door Styles Online

**STEP 3: SELECT DOOR GLAZING**

(Check one box below)

- 10** Clear Acrylic
- 13** Clear Wire Glass with Safety Film
- 15** Bronze Acrylic

- 16** Gray Acrylic
- 17** Clear Tempered Glass
- 18** Laminated Safety Glass

**STEP 4: SELECT OPTIONAL FEATURES AT ADDITIONAL COST**

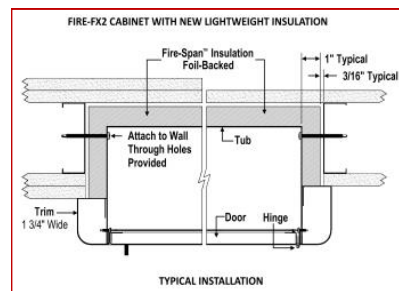
- Dark Bronze Anodized Door & Trim (Pull will be painted to match)
- Optional Tub Color: \_\_\_ Black \_\_\_ Red
- CA** Commander Alarm
- BA** Brigadier Alarm
- Futura "Fire" Handle \_\_\_ Mill \_\_\_ Red \_\_\_ White
- PRH** Recessed Pull Handle
- PUCH** Polished Chrome Handle
- No Shelf for 8000 Series

- FDVO** Decal Fire Department Valve Octagonal 6 x 6"
- 1403** Decal Fire Hose Black/Red Horiz. Letters 4 x 9
- LDCHRFDV-R** Diecut Fire Dept. Valve Horiz. 10-1/4 x 4-3/8
- LDCVRFDV** Diecut Fire Dept Valve Vert. 3/4" x 21 1/2"
- LDCVRFDV-R** Diecut Fire Dept Valve Vert. Rever. 3/4" x 21 1/2"
- LDCHRFDV** Diecut Fire Department Valve Ascend. 1" x 17"
- LDCVRFSCV-R** Diecut Fire Sprinkler Cont. Valve Vert 3/4" x 18"

Fire Hose Racks - See separate submittal

- LDCVBF** Black Vertical FE Letters
- LDCVRF** Red Vertical FE Letters
- LDCVWF** White Vertical FE Letters
- LDCHBF** Black Horizontal FE Letters
- LDCHRF** Red Horizontal FE Letters
- LDCHWF** White Horizontal FE Letters
- Etched Glass/Engraved Metal Lettering

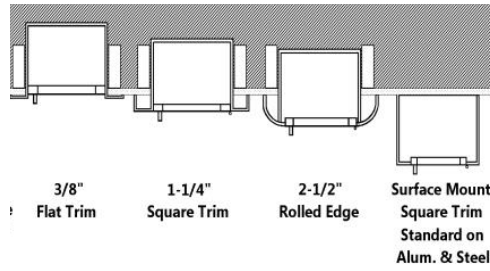
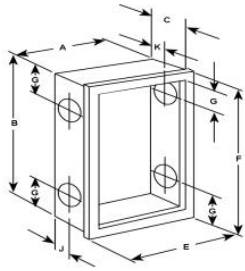
(Check Box & Attach Separate Submittal)



It is the responsibility of the customer to communicate specifications and product performance requirements that are needed for their application. This document is intended to convey potential product configurations and offerings. It is not to be used to imply or represent a specification or rating, of finished products shipped. Detailed, specific submittals can be created upon request. It is the responsibility of the customer to specify product accordingly to comply with local laws, codes, and ordinances.

 ©2023 ACTIVAR CONSTRUCTION PRODUCTS GROUP, INC.	Distributor:	Quantity:
	Contractor:	Approved By:
	Model #:	Architect:
	Project:	Date:
6/5/2023		

SUBMITTAL: CROWLINE™ FIRE-FX2™ VALVE & HOSE CABINETS - ALUMINUM PAGE 2 OF 2



TRIM & DOOR MATERIAL & SERIES		TUB I.D. W x H x D in Inches			FRAME O.D.		RECESSED WALL OPENING			RECOMMENDED HOSE RACK, FIRE DEPT. VALVES & EXTINGUISHERS	
QTY	#	TRIM STYLE	A	B	C	E	F	Width	Height		Depth
<b>Cabinets with Hose Rack &amp; Extinguisher or FD Valve— ADA Cabinets Indicated in Blue &amp; ●</b>											
	6025	FLAT TRIM 3/8" ●	24	30	6	27 3/8	33 3/8	26 5/16	32 5/16	6 15/16	HOSE RACK: 1- 1/2" x 1-1/2" Hose Rack Unit with 50 or 75' Hose (HRA-050B, 050CH, 075B, 075CH) & Cosmic 2½ or Galaxy 2½- 5 lb Extinguisher
	6026	1-1/4" SQUARE EDGE ●	24	30	6	27 3/8	33 3/8	26 5/16	32 5/16	5 15/16	
	6027	2-1/2" ROLLED EDGE ●	24	30	6	27 3/8	33 3/8	26 5/16	32 5/16	5 5/16	
	6225	FLAT TRIM 3/8" ●	24	34 3/4	6	27 3/8	38 1/8	26 5/16	37 1/16	6 15/16	HOSE RACK: 1- 1/2" x 1-1/2" Hose Rack Unit; 100' Hose (HRA 100B, HRA100CH ) & Cosmic 2½ or Galaxy 2½- 5 lb Extinguisher
	6226	1-1/4" SQUARE EDGE ●	24	34 3/4	6	27 3/8	38 1/8	26 5/16	37 1/16	5 15/16	
	6227	2-1/2" ROLLED EDGE ●	24	34 3/4	6	27 3/8	38 1/8	26 5/16	37 1/16	5 5/16	
	6125	FLAT TRIM 3/8" ●	24	30	8	27 3/8	33 3/8	26 5/16	32 5/16	8 15/16	HOSE RACK: 2-1/2" x 1-1/2" Hose Rack Unit; 50 or 75' Hose (HRA050B-2.5, HRA075B-2.5)
	6126	1-1/4" SQUARE EDGE ●	24	30	8	27 3/8	33 3/8	26 5/16	32 5/16	7 15/16	
	6127	2-1/2" ROLLED EDGE ●	24	30	8	27 3/8	33 3/8	26 5/16	32 5/16	7 5/16	
	6425	FLAT TRIM 3/8" ●	24	34 3/4	8	27 3/8	38 1/8	26 5/16	37 1/16	8 15/16	HOSE RACK: 2-1/2" x 1-1/2" Hose Rack Unit 100' Hose (HRA100B-2.5)
	6426	1-1/4" SQUARE EDGE ●	24	34 3/4	8	27 3/8	38 1/8	26 5/16	37 1/16	7 15/16	
	6427	2-1/2" ROLLED EDGE ●	24	34 3/4	8	27 3/8	38 1/8	26 5/16	37 1/16	7 5/16	
	6625	FLAT TRIM 3/8" ●	24	38 3/4	8	27 3/8	42 1/8	26 5/16	41 1/16	8 15/16	HOSE RACK: 2-1/2" x 1-1/2" Hose Rack Unit 125' Hose (HRA125B-2.5)
	6626	1-1/4" SQUARE EDGE ●	24	38 3/4	8	27 3/8	42 1/8	26 5/16	41 1/16	7 15/16	
	6627	2-1/2" ROLLED EDGE ●	24	38 3/4	8	27 3/8	42 1/8	26 5/16	41 1/16	7 5/16	
	6325	FLAT TRIM 3/8" ●	30	30	8	33 3/8	33 3/8	32 5/16	32 5/16	8 15/16	HOSE RACK & FD VALVE OR EXTINGUISHER: 1-1/2" OR 2-1/2" Valve 50' or 75' Hose Rack Unit Plus FD Valve or Cosmic or Galaxy Extinguisher
	6326	1-1/4" SQUARE EDGE ●	30	30	8	33 3/8	33 3/8	32 5/16	32 5/16	7 15/16	
	6327	2-1/2" ROLLED EDGE ●	30	30	8	33 3/8	33 3/8	32 5/16	32 5/16	7 5/16	
	6525	FLAT TRIM 3/8" ●	32 3/4	34 3/4	8	36 1/8	38 1/8	35 1/16	37 1/16	8 15/16	HOSE RACK & FD VALVE OR EXTINGUISHER: 1-1/2" OR 2-1/2" Valve, 100' Hose Rack Unit Plus FD Valve or Cosmic or Galaxy Extinguisher
	6526	1-1/4" SQUARE EDGE ●	32 3/4	34 3/4	8	36 1/8	38 1/8	35 1/16	37 1/16	7 15/16	
	6527	2-1/2" ROLLED EDGE ●	32 3/4	34 3/4	8	36 1/8	38 1/8	35 1/16	37 1/16	7 5/16	
	7225	FLAT TRIM 3/8" ●	32 3/4	38 3/4	8	36 1/8	42 1/8	35 1/16	41 1/16	8 15/16	HOSE RACK & FD VALVE OR EXTINGUISHER: 1-1/2" OR 2-1/2" Valve, 125' Hose Rack Unit Plus FD Valve or Cosmic or Galaxy Extinguisher
	7226	1-1/4" SQUARE EDGE ●	32 3/4	38 3/4	8	36 1/8	42 1/8	35 1/16	41 1/16	7 15/16	
	7227	2-1/2" ROLLED EDGE ●	32 3/4	38 3/4	8	36 1/8	42 1/8	35 1/16	41 1/16	7 5/16	
<b>Cabinets for Fire Department Valves</b>											
	8525	FLAT TRIM 3/8" ●	18	18	8	21 3/8	21 3/8	20 5/16	20 5/16	8 15/16	FIRE DEPARTMENT VALVE: 1-1/2" or 2-1/2" Fire Department Valve with Cap and Chain
	8526	1-1/4" SQUARE EDGE ●	18	18	8	21 3/8	21 3/8	20 5/16	20 5/16	7 15/16	
	8527	2-1/2" ROLLED EDGE ●	18	18	8	21 3/8	21 3/8	20 5/16	20 5/16	7 5/16	
	8425	FLAT TRIM 3/8" ●	18	18	10	21 3/8	21 3/8	20 5/16	20 5/16	10 15/16	DUAL SIDE BY SIDE FIRE DEPARTMENT VALVE & EXTINGUISHER OR 2 FIRE DEPARTMENT VALVES: 1-1/2" or 2-1/2" FD Valve w/Cap and Chain Plus Extinguisher Cosmic & Galaxy 2.5-10
	8426	1-1/4" SQUARE EDGE ●	18	18	10	21 3/8	21 3/8	20 5/16	20 5/16	9 15/16	
	8427	2-1/2" ROLLED EDGE ●	18	18	10	21 3/8	21 3/8	20 5/16	20 5/16	9 5/16	
	8725	FLAT TRIM 3/8" ●	26	26	8	29 3/8	29 3/8	28 5/16	28 5/16	8 15/16	DUAL EXTINGUISHER & FD VALVE CABINET WITH SHELF: Shelf is 12" from bottom. Cosmic or Galaxy Extinguisher
	8726	1-1/4" SQUARE EDGE ●	26	26	8	29 3/8	29 3/8	28 5/16	28 5/16	7 15/16	
	8727	2-1/2" ROLLED EDGE ●	26	26	8	29 3/8	29 3/8	28 5/16	28 5/16	7 5/16	
	8625	FLAT TRIM 3/8" ●	26	26	10	29 3/8	29 3/8	28 5/16	28 5/16	10 15/16	
	8626	1-1/4" SQUARE EDGE ●	26	26	10	29 3/8	29 3/8	28 5/16	28 5/16	9 15/16	
	8627	2-1/2" ROLLED EDGE ●	26	26	10	29 3/8	29 3/8	28 5/16	28 5/16	9 5/16	
	8025	FLAT TRIM 3/8" ●	16	40	9	19 3/8	43 3/8	18 5/16	42 5/16	9 15/16	
	8026	1-1/4" SQUARE EDGE ●	16	40	9	19 3/8	43 3/8	18 5/16	42 5/16	8 15/16	
	8027	2-1/2" ROLLED EDGE ●	16	40	9	19 3/8	43 3/8	18 5/16	42 5/16	8 5/16	

ADA Cabinet Mounting Height: Standard Pull on G, E, W, L22, A and B Door Styles with Saf-T-Lok are 3 5/8" Higher than Door Center, so Allow for that When Mounting Cabinet. Standard Pull with No Lock or ADA Recessed Pull are Centered on Door.