

**SUBMITTAL: CROWNLINE™ VALVE & HOSE CABINETS - ALUMINUM**

**Crownline Cabinets Provide A Wide Selection of Door Styles, Glazing and Sizes. These Durable Cabinets are Designed to Industry Standards for Fire Department Valves, Fire Hose Rack Units and Extinguishers.**

**Door & Trim:** Clear anodized aluminum. 1-3/4" Trim on face and door. These flush cabinet doors are mounted in a 5/8" door stop, are attached by a continuous hinge and are equipped with zinc-plated handle and roller catch for all non-locking doors. Theft-deterrent SAF-T-LOK™ also available.

**Trim Style and Depth:** 1-3/4" face trim on frame and 1-1/4" trim on door. *Recessed* - 3/8" flat trim.

*Semi-recessed* - 1-1/4" Square Edge or 2-1/2" Rolled Edge. Rolled edge models are constructed of mechanically-joined extrusions (see photo).

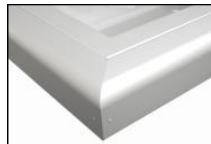
*Surface mounted* - Square edge. See separate submittal for trimless.

**Tub:** CRS, white powder-coat finish standard. Surface-mounted tubs are of the same material as the door and trim

**Knockouts:** K.O.'s are provided on both sides of the cabinet. K.O.'s on left side will be located using "J" dimension, K.O.'s on right side using "K" dimension and may be offset from K.O.'s on "J" side of cabinet. Models 6027 & 6227 - Specify knockout location. Provided on surface mounted cabinets by request except for rolled edge models. Custom location K.O.'s available. See page 2 for drawings of K.O. locations.

**Special Features:** Models 8025, 8026, 8027 & 8023 have a shelf 12" from the bottom of the cabinet and are designed to hold a fire extinguisher plus FD valve or other accessory. Those models can also be ordered without shelf to allow for lower mounting height of valve piping to meet NFPA14.

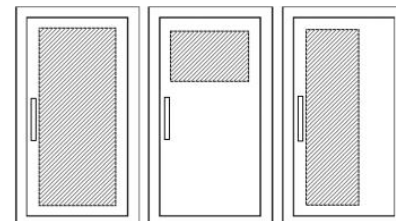
**Fire-Rated Option Available:** Yes - See separate submittal.



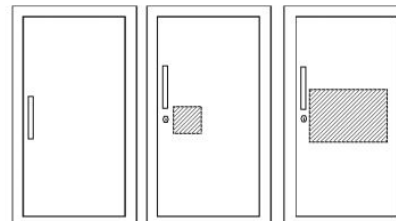
2-1/2" Rolled Edge



6225A10



F - Full glass with pull  
G - Full glass with pull handle and Saf-T-Lok (Not Shown)  
D - Horizontal duo panel with pull  
E - Horizontal duo panel with pull and Saf-T-Lok (Not Shown)  
V - Vertical duo panel with pull  
W - Vertical duo panel with pull and Saf-T-Lok (Not Shown)



S21 - Solid with pull  
L22 - Solid with pull and Saf-T-Lok  
B10 - Acrylic view window with pull, and Saf-T-Lok  
L24 - Solid with cylinder key lock/no pull (L22,24 not shown)  
A - Center duo panel with pull and Saf-T-Lok

**STEP 1: SELECT MODEL NUMBER, TRIM & QUANTITY (Refer to Chart on Page 2)**

**STEP 2: SELECT DOOR STYLE**

(Check one box below)

- |   |  |
|---|--|
| <input type="checkbox"/> <b>F</b> Full Glazing                        | <input type="checkbox"/> <b>L22</b> Solid with SAF-T-LOK                 |
| <input type="checkbox"/> <b>G</b> Full Glazing with SAF-T-LOK™        | <input type="checkbox"/> <b>V</b> Vertical Duo                           |
| <input type="checkbox"/> <b>D</b> Horizontal Duo Panel                | <input type="checkbox"/> <b>W</b> Vertical Duo with SAF-T-LOK            |
| <input type="checkbox"/> <b>E</b> Horizontal Duo Panel with SAF-T-LOK | <input type="checkbox"/> <b>B10</b> Acrylic View Window with SAF-T-LOK   |
| <input type="checkbox"/> <b>A</b> Center Duo Panel with SAF-T-LOK     | <input type="checkbox"/> <b>L24</b> Solid with Cylinder Lock & No Handle |
| <input type="checkbox"/> <b>S21</b> Solid Door                        |  |

View Door Styles Online

ADA Cabinet Mounting Height: Standard Pull on G, E, W, L22, A and B Door Styles with Saf-T-Lok are 3 5/8" Higher than Door Center, so Allow for that When Mounting Cabinet. Standard Pull with No Lock or ADA Recessed Pull are Centered on Door.

**STEP 3: SELECT DOOR GLAZING**

(Check one box below)

- |  |   |
|--|---|
| <input type="checkbox"/> <b>10</b> Clear Acrylic                     | <input type="checkbox"/> <b>16</b> Gray Acrylic           |
| <input type="checkbox"/> <b>13</b> Clear Wire Glass with Safety Film | <input type="checkbox"/> <b>17</b> Clear Tempered Glass   |
| <input type="checkbox"/> <b>15</b> Bronze Acrylic                    | <input type="checkbox"/> <b>18</b> Laminated Safety Glass |

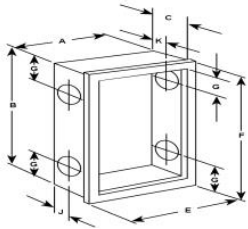
**STEP 4: OPTIONAL FEATURES AT ADDITIONAL COST:**

- |   |  |   |
|---|--|---|
| <input type="checkbox"/> Dark Bronze Anodized Door & Trim<br>(Pull will be painted to match)  | <input type="checkbox"/> <b>PUCH</b> Polished Chrome Handle  | <input type="checkbox"/> Black Vertical FE Letters <b>LDCVBFE</b>   |
| <input type="checkbox"/> Aluminum Tub - Clear Anodized  | <input type="checkbox"/> <b>FDVO</b> Decal <b>Fire Department Valve</b> Octagonal 6 x 6"             | <input type="checkbox"/> Red Vertical FE Letters <b>LDCVRFE</b>     |
| <input type="checkbox"/> Optional Tub Color: <input type="checkbox"/> Black <input type="checkbox"/> Red                                | <input type="checkbox"/> <b>1403</b> Decal <b>Fire Hose</b> Black/Red Horiz. Letters 4 x 9           | <input type="checkbox"/> White Vertical FE Letters <b>LDCVWFE</b>   |
| <input type="checkbox"/> Futura "Fire" Handle <input type="checkbox"/> Mill <input type="checkbox"/> Red <input type="checkbox"/> White | <input type="checkbox"/> <b>LDCHRFDV-R</b> Diecut <b>Fire Dept. Valve</b> Horiz. 10-1/4 x 4-3/8      | <input type="checkbox"/> Black Horizontal FE Letters <b>LDCHBFE</b> |
| <input type="checkbox"/> <b>PRH</b> Recessed Pull Handle  | <input type="checkbox"/> <b>LDCVRFDV</b> Diecut <b>Fire Dept Valve</b> Vert. 3/4" x 21 1/2"          | <input type="checkbox"/> Red Horizontal FE Letters <b>LDCHRFE</b>   |
| <input type="checkbox"/> <b>SA</b> Strobe Alarm (surface mount models)  | <input type="checkbox"/> <b>LDCVRFDV-R</b> Diecut <b>Fire Dept Valve</b> Vert. Rever. 3/4" x 21 1/2" | <input type="checkbox"/> White Horizontal FE Letters <b>LDCHWFE</b> |
| <input type="checkbox"/> <b>CA</b> Commander Alarm  | <input type="checkbox"/> <b>LDCHRFDV</b> Diecut <b>Fire Department Valve</b> Ascend. 1" x 17"        | <input type="checkbox"/> Etched Glass/Engraved Metal Lettering      |
| <input type="checkbox"/> <b>BA</b> Brigadier Alarm  | <input type="checkbox"/> <b>LDCVRFSCV-R</b> Diecut <b>Fire Sprinkler Cont. Valve</b> Vert 3/4" x 18" | <input type="checkbox"/> (Check Box & Attach Separate Submittal)    |
|   | Fire Hose Racks - See separate submittal   | <input type="checkbox"/> No Shelf for 8000 Series                   |

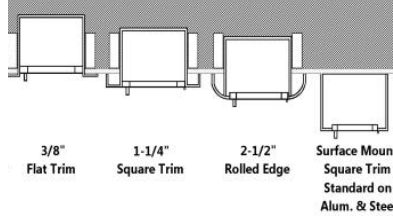
It is the responsibility of the customer to communicate specifications and product performance requirements that are needed for their application. This document is intended to convey potential product configurations and offerings. It is not to be used to imply or represent a specification or rating, of finished products shipped. Detailed, specific submittals can be created upon request. It is the responsibility of the customer to specify product accordingly to comply with local laws, codes, and ordinances.

<p><b>JL INDUSTRIES</b></p> <p>©2023 ACTIVAR CONSTRUCTION PRODUCTS GROUP, INC.</p>	Distributor:	Quantity:
	Contractor:	Approved By:
	Model #:	Architect:
	Project:	Date:
	6/5/2023	

SUBMITTAL: CROWLINE VALVE & HOSE CABINETS - ALUMINUM



• Cabinets that meet ADA projection requirement



ADA Cabinet Mounting Height: Standard Pull on G, E, W, A, L22 and B Door Styles with Saf-Lok are 3 5/8\"/>

TRIM & DOOR MATERIAL & SERIES		TUB I.D. W x H x D in Inches			FRAME O.D.		RECESSED WALL OPENING			KNOCKOUT LOCATIONS			RECOMMENDED HOSE RACK, FD VALVES & EXTINGUISHERS	
QTY	#	TRIM STYLE	A	B	C	E	F	Width	Height	Depth	J	G		K
<b>Cabinets with Hose Rack &amp; Extinguisher or FD Valve— ADA Cabinets Indicated in Blue &amp; •</b>														
	6025	FLAT TRIM 3/8" •	24	30	6	27 3/8	33 3/8	25	31	5 7/8	2 1/2	4	2 1/2	HOSE RACK: 1- 1/2" x 1-1/2" Hose Rack Unit with 50 or 75' Hose (HRA:050B, 050CH, 075B, 075CH) & Cosmic 2½ or Galaxy 2½- 5 lb Extinguisher
	6026	1-1/4" SQUARE EDGE •	24	30	6	27 3/8	33 3/8	25	31	4 7/8	2 1/2	4	2 1/2	
	6027	2-1/2" ROLLED EDGE •	24	30	6	27 3/8	33 3/8	25	31	4 1/4	Specify When Ordering			
	6023	SURFACE MOUNTED	27 3/16	33 3/16	6 1/2	27 3/8	33 3/8	-	-	-	Upon Request			HOSE RACK: 1- 1/2" x 1-1/2" Hose Rack Unit - 100' Hose (HRA 100B, HRA100CH) & Cosmic 2½ or Galaxy 2½- 5 lb Extinguisher
	6225	FLAT TRIM 3/8" •	24	34 3/4	6	27 3/8	38 1/8	25	35 3/4	5 7/8	2 1/2	4	2 1/2	
	6226	1-1/4" SQUARE EDGE •	24	34 3/4	6	27 3/8	38 1/8	25	35 3/4	4 7/8	2 1/2	4	2 1/2	
	6227	2-1/2" ROLLED EDGE •	24	34 3/4	6	27 3/8	38 1/8	25	35 3/4	4 1/4	Specify When Ordering		HOSE RACK: 2-1/2" x 1-1/2" Hose Rack Unit 50 or 75' Hose (HRA050B-2.5, HRA075B-2.5)	
	6223	SURFACE MOUNTED	27 3/16	37 15/16	6 1/2	27 3/8	38 1/8	-	-	-	Upon Request			
	6125	FLAT TRIM 3/8" •	24	30	8	27 3/8	33 3/8	25	31	7 7/8	4	4		2 1/2
	6126	1-1/4" SQUARE EDGE •	24	30	8	27 3/8	33 3/8	25	31	6 7/8	4	4	2 1/2	HOSE RACK: 2-1/2" x 1-1/2" Hose Rack Unit 50 or 75' Hose (HRA050B-2.5, HRA075B-2.5)
	6127	2-1/2" ROLLED EDGE •	24	30	8	27 3/8	33 3/8	25	31	6 1/4	4	4	2 1/2	
	6123	SURFACE MOUNTED	27 3/16	33 3/16	8 1/2	27 3/8	33 3/8	-	-	-	Upon Request			
	6425	FLAT TRIM 3/8" •	24	34 3/4	8	27 3/8	38 1/8	25	35 3/4	7 7/8	4	4	2 1/2	HOSE RACK: 2-1/2" x 1-1/2" Hose Rack Unit 100' Hose (HRA100B-2.5)
	6426	1-1/4" SQUARE EDGE •	24	34 3/4	8	27 3/8	38 1/8	25	35 3/4	6 7/8	4	4	2 1/2	
	6427	2-1/2" ROLLED EDGE •	24	34 3/4	8	27 3/8	38 1/8	25	35 3/4	6 1/4	4	4	2 1/2	
	6423	SURFACE MOUNTED	27 3/16	37 15/16	8 1/2	27 3/8	38 1/8	-	-	-	Upon Request			HOSE RACK: 2-1/2" x 1-1/2" Hose Rack Unit 125' Hose (HRA125B-2.5)
	6625	FLAT TRIM 3/8" •	24	38 3/4	8	27 3/8	42 1/8	25	39 3/4	7 7/8	4	4	2 1/2	
	6626	1-1/4" SQUARE EDGE •	24	38 3/4	8	27 3/8	42 1/8	25	39 3/4	6 7/8	4	4	2 1/2	
	6627	2-1/2" ROLLED EDGE •	24	38 3/4	8	27 3/8	42 1/8	25	39 3/4	6 1/4	4	4	2 1/2	HOSE RACK & FD VALVE OR EXTINGUISHER: 1-1/2" OR 2-1/2" Valve 50' or 75' Hose Rack Unit Plus FD Valve Cosmic or Galaxy Extinguisher
	6623	SURFACE MOUNTED	27 3/16	41 15/16	8 1/2	27 3/8	42 1/8	-	-	-	Upon Request			
	6325	FLAT TRIM 3/8" •	30	30	8	33 3/8	33 3/8	31	31	7 7/8	4	4	2 1/2	
	6326	1-1/4" SQUARE EDGE •	30	30	8	33 3/8	33 3/8	31	31	6 7/8	4	4	2 1/2	HOSE RACK & FD VALVE OR EXTINGUISHER: 1-1/2" OR 2-1/2" Valve, 100' Hose Rack Unit Plus FD Valve or Cosmic or Galaxy Extinguisher
	6327	2-1/2" ROLLED EDGE •	30	30	8	33 3/8	33 3/8	31	31	6 1/4	4	4	2 1/2	
	6323	SURFACE MOUNTED	33 3/16	33 3/16	8 1/2	33 3/8	33 3/8	-	-	-	Upon Request			
	6525	FLAT TRIM 3/8" •	32 3/4	34 3/4	8	36 1/8	38 1/8	33 3/4	35 3/4	7 7/8	4	4	2 1/2	HOSE RACK & FD VALVE OR EXTINGUISHER: 1-1/2" OR 2-1/2" Valve, 100' Hose Rack Unit Plus FD Valve or Cosmic or Galaxy Extinguisher
	6526	1-1/4" SQUARE EDGE •	32 3/4	34 3/4	8	36 1/8	38 1/8	33 3/4	35 3/4	6 7/8	4	4	2 1/2	
	6527	2-1/2" ROLLED EDGE •	32 3/4	34 3/4	8	36 1/8	38 1/8	33 3/4	35 3/4	6 1/4	4	4	2 1/2	
	6523	SURFACE MOUNTED	35 15/16	37 15/16	8 1/2	36 1/8	38 1/8	-	-	-	Upon Request			HOSE RACK & FD VALVE OR EXTINGUISHER: 1-1/2" OR 2-1/2" Valve, 125' Hose Rack Unit Plus FD Valve or Cosmic or Galaxy Extinguisher
	7225	FLAT TRIM 3/8" •	32 3/4	38 3/4	8	36 1/8	42 1/8	33 3/4	39 3/4	7 7/8	4	4	2 1/2	
	7226	1-1/4" SQUARE EDGE •	32 3/4	38 3/4	8	36 1/8	42 1/8	33 3/4	39 3/4	6 7/8	4	4	2 1/2	
	7227	2-1/2" ROLLED EDGE •	32 3/4	38 3/4	8	36 1/8	42 1/8	33 3/4	39 3/4	6 1/4	4	4	2 1/2	
	7223	SURFACE MOUNTED	35 15/16	41 15/16	8 1/2	36 1/8	42 1/8	-	-	-	Upon Request			
<b>Cabinets for Fire Department Valves</b>														
	8525	FLAT TRIM 3/8" •	18	18	8	21 3/8	21 3/8	19	19	7 7/8	4	9	2 1/2	FIRE DEPARTMENT VALVE: 1-1/2" or 2-1/2" Fire Department Valve with Cap and Chain
	8526	1-1/4" SQUARE EDGE •	18	18	8	21 3/8	21 3/8	19	19	6 7/8	4	9	2 1/2	
	8527	2-1/2" ROLLED EDGE •	18	18	8	21 3/8	21 3/8	19	19	6 1/4	4	9	2 1/2	
	8523	SURFACE MOUNTED	21 3/16	21 3/16	8 1/2	21 3/8	21 3/8	-	-	-	Upon Request			
	8425	FLAT TRIM 3/8" •	18	18	10	21 3/8	21 3/8	19	19	9 7/8	5	9	5	
	8426	1-1/4" SQUARE EDGE •	18	18	10	21 3/8	21 3/8	19	19	8 7/8	5	9	5	DUAL SIDE BY SIDE FIRE DEPARTMENT VALVE & EXTINGUISHER OR 2 FIRE DEPARTMENT VALVES: 1-1/2" or 2-1/2" FD Valve w/Cap and Chain Plus Extinguisher - Cosmic & Galaxy 2.5-10
	8427	2-1/2" ROLLED EDGE •	18	18	10	21 3/8	21 3/8	19	19	8 1/4	5	9	5	
	8423	SURFACE MOUNTED	21 3/16	21 3/16	10 1/2	21 3/8	21 3/8	-	-	-	Upon Request			
	8725	FLAT TRIM 3/8" •	26	26	8	29 3/8	29 3/8	27	27	7 7/8	4	13	2 1/2	
	8726	1-1/4" SQUARE EDGE •	26	26	8	29 3/8	29 3/8	27	27	6 7/8	4	13	2 1/2	
	8727	2-1/2" ROLLED EDGE •	26	26	8	29 3/8	29 3/8	27	27	6 1/4	4	13	2 1/2	DUAL EXTINGUISHER & FD VALVE CABINET W/SHELF: Shelf is 12" from bottom. Cosmic or Galaxy Extinguisher
	8723	SURFACE MOUNTED	29 3/16	29 3/16	8 1/2	29 3/8	29 3/8	-	-	-	Upon Request			
	8625	FLAT TRIM 3/8" •	26	26	10	29 3/8	29 3/8	27	27	9 7/8	5	13	5	
	8626	1-1/4" SQUARE EDGE •	26	26	10	29 3/8	29 3/8	27	27	8 7/8	5	13	5	
	8627	2-1/2" ROLLED EDGE •	26	26	10	29 3/8	29 3/8	27	27	8 1/4	5	13	5	
	8623	SURFACE MOUNTED	29 3/16	29 3/16	10 1/2	29 3/8	29 3/8	-	-	-	Upon Request			
	8025	FLAT TRIM 3/8" •	16	40	9	19 3/8	43 3/8	17	41	8 7/8	4 1/4	6	4 1/4	DUAL EXTINGUISHER & FD VALVE CABINET W/SHELF: Shelf is 12" from bottom. Cosmic or Galaxy Extinguisher
	8026	1-1/4" SQUARE EDGE •	16	40	9	19 3/8	43 3/8	17	41	7 7/8	4 1/4	6	4 1/4	
	8027	2-1/2" ROLLED EDGE •	16	40	9	19 3/8	43 3/8	17	41	7 1/4	4 1/4	6	4 1/4	
	8023	SURFACE MOUNTED	19 3/16	43 3/16	9 1/2	19 3/8	43 3/8	-	-	-	Upon Request			