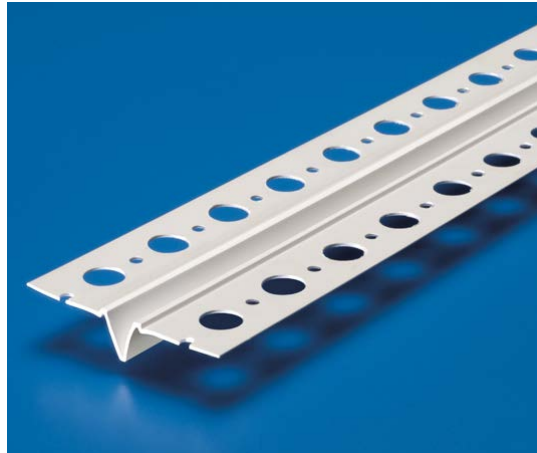


Drywall Accessories

Section: 09260

Control Joint

Product Number	Dimensions/Descriptions	Pieces per Box
2027-16	Surface mount control joint with removable tape. 10' (3 m) Lengths	60

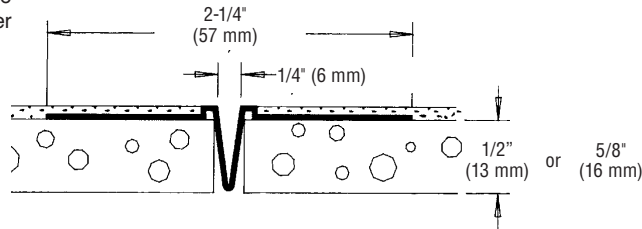


Application:

Used in wall or ceiling applications. Designed to relieve stress in large areas. Removable tape protects the 1/2" (13 mm) deep V during installation. Has built-in 1/16" (2 mm) stop to ensure proper finish thickness.

Specifications:

Drywall Control Joint shall be Plastic Components Inc. #2027-16. All drywall accessories shall conform to ASTM standards D3678 and C1047. All products shall be third party tested to meet ASTM standard D4216 and be Canadian Code Compliant. Finish compatible with drywall mud and all paint finishes. They shall be used where specified by the design authority and installed per industry standards.



C-21