

Stucco and Plaster

Section: 09200

Continuous Soffit Vent 2-3/8", 3", 4" and 6" vents

Product Number	Ground	Vent Area	Air Flow/linear ft.	Pieces per Box
549-50	1/2" (13 mm)	2-3/8" (60 mm)	15 sq. in. (9,678 sq. mm)	13
549-58	5/8" (16 mm)	2-3/8" (60 mm)	15 sq. in. (9,678 sq. mm)	13
549-75	3/4" (19 mm)	2-3/8" (60 mm)	15 sq. in. (9,678 sq. mm)	13
549-78	7/8" (22 mm)	2-3/8" (60 mm)	15 sq. in. (9,678 sq. mm)	13
3549-50	1/2" (13 mm)	3" (76 mm)	15 sq. in. (9,678 sq. mm)	13
3549-58	5/8" (16 mm)	3" (76 mm)	15 sq. in. (9,678 sq. mm)	13
3549-75	3/4" (19 mm)	3" (76 mm)	15 sq. in. (9,678 sq. mm)	13
3549-78	7/8" (22 mm)	3" (76 mm)	15 sq. in. (9,678 sq. mm)	13
4549-50	1/2" (13 mm)	4" (102 mm)	16 sq. in. (10,323 sq. mm)	13
4549-58	5/8" (16 mm)	4" (102 mm)	16 sq. in. (10,323 sq. mm)	13
4549-75	3/4" (19 mm)	4" (102 mm)	16 sq. in. (10,323 sq. mm)	13
4549-78	7/8" (22 mm)	4" (102 mm)	16 sq. in. (10,323 sq. mm)	13
6549-50	1/2" (13 mm)	6" (152 mm)	18 sq. in. (11,614 sq. mm)	10
6549-75	3/4" (19 mm)	6" (152 mm)	18 sq. in. (11,614 sq. mm)	10

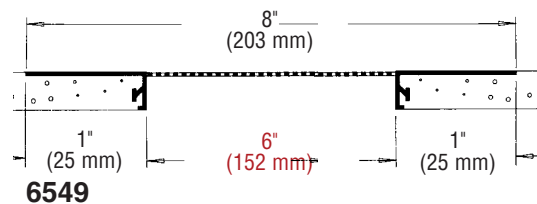
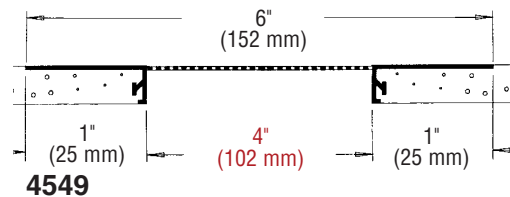
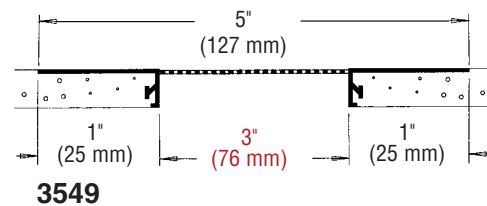
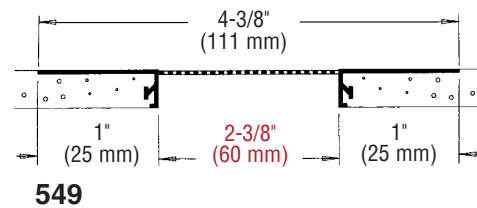
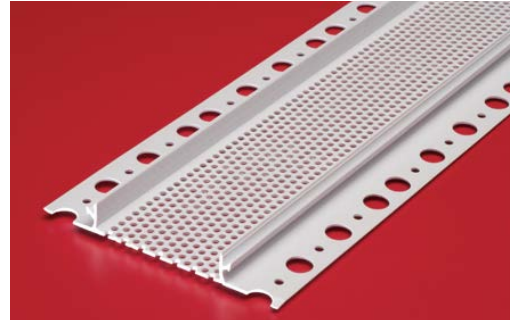
10' (3 m) Lengths
Connector Clips Included

Application:

Low cost and simple solution to venting soffit areas. Vent holes 1/8" (3 mm) diameter. Wide nailing flange makes installation easier. Will not rust or corrode. Excellent paint adhesion. "Eyebrow" assures excellent keying of stucco to the leg. Connector clip included.

Specifications:

Soffit Vent shall be Plastic Components Inc. # _____.
All exterior accessories shall be of PVC material conforming to ASTM standards D1784, C1063, C1861 and D4216. They shall be used where specified by the design authority and installed per industry standards.



A-32