

Since 1969  
**PLASTIC PC**  
**COMPONENTS** inc.

**Permanent, Molded-in Color – NO Peeling, Chipping or Color Loss!**

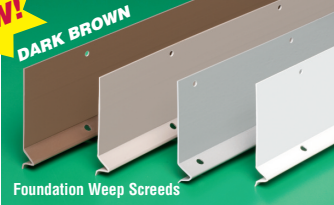
## Color Trims for Stone Veneer



**Plastic Components** offers **WHITE, GRAY, TAN** and **DARK BROWN** foundation sill screeds, casing beads and drip edges for stone veneer applications.

The colorant for each is molded into the trim so there's no chipping or color loss. Our stone veneer trims come in 10 ft (3 m) lengths and meet ASTM standards D1784, C1063, D4216 and C1780.

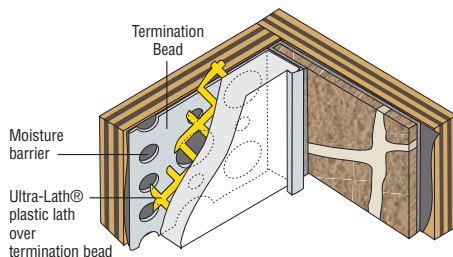
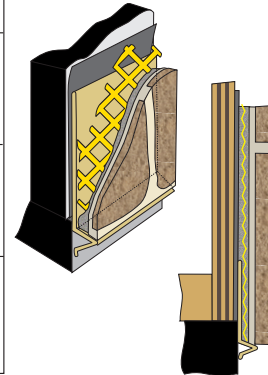
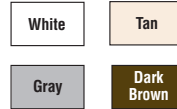
**NEW!**



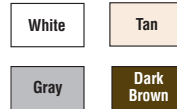
### Foundation Weep Screeds

Foundation weep screeds install at the plate line or stem wall to provide a stop for stone veneer, allowing moisture to migrate down and away from the wall.

Product Number	Description FHA Weep Screeds	Ground	Pieces in Box
632-50	White	1/2" (13 mm)	35
632-58	weep screed with	5/8" (16 mm)	35
632-75	3-1/2" (89 mm)	3/4" (19 mm)	35
632-78	flange	7/8" (22 mm)	30
632-100	for framing applications	1" (25 mm)	25
632-50TAN	Tan	1/2" (13 mm)	35
632-58TAN	weep screed with	5/8" (16 mm)	35
632-75TAN	3-1/2" (89 mm)	3/4" (19 mm)	35
632-78TAN	flange	7/8" (22 mm)	30
632-100TAN	for framing applications	1" (25 mm)	25
632-50GRAY	Gray	1/2" (13 mm)	35
632-58GRAY	weep screed with	5/8" (16 mm)	35
632-75GRAY	3-1/2" (89 mm)	3/4" (19 mm)	35
632-78GRAY	flange	7/8" (22 mm)	30
632-100GRAY	for framing applications	1" (25 mm)	25
632-50DB	Dark Brown	1/2" (13 mm)	35
632-58DB	weep screed with	5/8" (16 mm)	35
632-75DB	3-1/2" (89 mm)	3/4" (19 mm)	35
632-78DB	flange	7/8" (22 mm)	30
632-100DB	for framing applications	1" (25 mm)	25



Product Number	Description Termination Bead	Ground	Pieces in Box
1050	White	1/2" (13 mm)	75
1058	with 1-1/4" (32 mm)	5/8" (16 mm)	75
1075	perforated flange	3/4" (19 mm)	75
1078		7/8" (22 mm)	75
1100		1" (25 mm)	50
1050TAN	Tan	1/2" (13 mm)	75
1058TAN	with 1-1/4" (32 mm)	5/8" (16 mm)	75
1075TAN	perforated flange	3/4" (19 mm)	75
1078TAN		7/8" (22 mm)	75
1100TAN		1" (25 mm)	50
1050GRAY	Gray	1/2" (13 mm)	75
1058GRAY	with 1-1/4" (32 mm)	5/8" (16 mm)	75
1075GRAY	perforated flange	3/4" (19 mm)	75
1078GRAY		7/8" (22 mm)	75
1100GRAY		1" (25 mm)	50
1050DB	Dark Brown	1/2" (13 mm)	75
1058DB	with 1-1/4" (32 mm)	5/8" (16 mm)	75
1075DB	perforated flange	3/4" (19 mm)	75
1078DB		7/8" (22 mm)	75
1100DB		1" (25 mm)	50



### Termination Beads

Termination beads form a finished edge between the stone veneer and other materials such as vinyl or cementitious siding, stucco, etc.

Add suffix "WP" to order with weep holes. Example: 1050TANWP



LISTED PRODUCT

PRODUCT INFORMATION

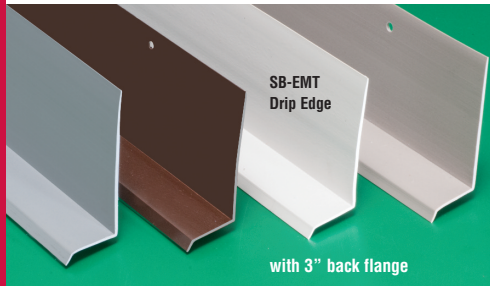
© 2009, rev 2017 Plastic Components Inc.

**NO Peeling, Chipping or Color Loss – Eliminates Painting – Rustproof**

## Color Trims for Stone Veneer

Since 1969  
**PLASTIC PC**  
**COMPONENTS** inc.

PRODUCT INFORMATION



### Window/Door Drip Edges

Our SB-EMT series drip edges are the PVC trims to choose for extreme moisture conditions. Designed for use over window or door openings, the sloped front edge moves moisture out and away from the wall assembly.

### SB-EMT series • 3" back flange



Product Number	Description Drip Edge	Ground	Pieces in Box
SB-EMT75	White	3/4" (19 mm)	30
SB-EMT1	Drip Edge	1" (25 mm)	30
SB-EMT15	with 3" (76 mm)	1-1/2" (38 mm)	30
SB-EMT2	back flange	2" (51 mm)	30
SB-EMT75TAN	Tan	3/4" (19 mm)	30
SB-EMT1TAN	Drip Edge	1" (25 mm)	30
SB-EMT15TAN	with 3" (76 mm)	1-1/2" (38 mm)	30
SB-EMT2TAN	back flange	2" (51 mm)	30
SB-EMT75GRAY	Gray	3/4" (19 mm)	30
SB-EMT1GRAY	Drip Edge	1" (25 mm)	30
SB-EMT15GRAY	with 3" (76 mm)	1-1/2" (38 mm)	30
SB-EMT2GRAY	back flange	2" (51 mm)	30
SB-EMT75DB	Dark Brown	3/4" (19 mm)	30
SB-EMT1DB	Drip Edge	1" (25 mm)	30
SB-EMT15DB	with 3" (76 mm)	1-1/2" (38 mm)	30
SB-EMT2DB	back flange	2" (51 mm)	30



## More for Stone Veneer

### Ultra-Lath Plus® Plastic Lath

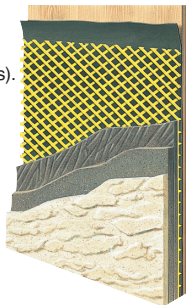
For exterior or interior vertical applications over code-approved substrates (non-rated assemblies).

Non-rusting Ultra-Lath Plus is 1/4" self-furred for exceptional keying. It is impervious to sand and the harsh chemicals found in portland cement-based stucco.

Available in sheets (with or without paper backing), and in rolls and strips.

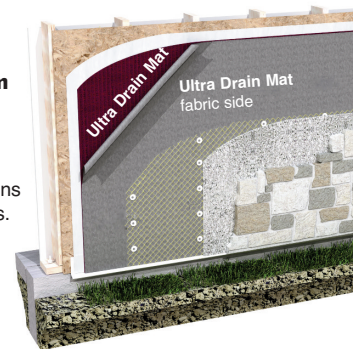
Meets ASTM C1063, C1764, C1780, C1787, C1788, C1861

Fire-tested NFPA 285



### Ultra Drain Mat™ Drainage/Ventilation System

Available in .25" and .40" thicknesses, Plastic Components' **ULTRA DRAIN MAT** controls moisture in stone veneer applications and most exterior cladding systems.



Distributed by

**Note** All butt joints, intersections and ends shall be caulked at the time of installation using an elastomeric sealant such as Plastic Components' Ultra-Tech™ (PC-ULTW).