

2022

# Stucco and Plaster

Section: 09200

## Window/Door Casing Bead

Product Number	Dimension A Window/Door Casing Bead	Back Flange Dimension B	Pieces in Box
1050-58	1/2" (13 mm) ground	5/8" (16 mm)	50
1058-50	5/8" (16 mm) ground	1/2" (13 mm)	50
1058-58	5/8" (16 mm) ground	5/8" (16 mm)	50
1058-75	5/8" (16 mm) ground	3/4" (19 mm)	50
1058-78	5/8" (16 mm) ground	7/8" (22 mm)	50
1078-50	7/8" (22 mm) ground	1/2" (13 mm)	50
1078-58	7/8" (22 mm) ground	5/8" (16 mm)	50

10' (3 m) Lengths

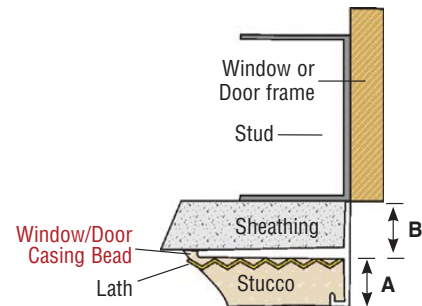


### Application:

Creates a decorative reveal at the termination point of window and door openings.

### Specification:

Window/Door Casing Bead shall be Plastic Components Inc. #105875 series. All exterior accessories shall be of PVC material conforming to ASTM standards D1784, C926, C1063, C1861 and D4216. They shall be used where specified by an design authority and installed per industry standards.



All butt joints, intersections and ends shall be caulked at the time of installation using an elastomeric sealant, such as Plastic Components' Ultra-Tech™ (PC-ULTW).



A-13