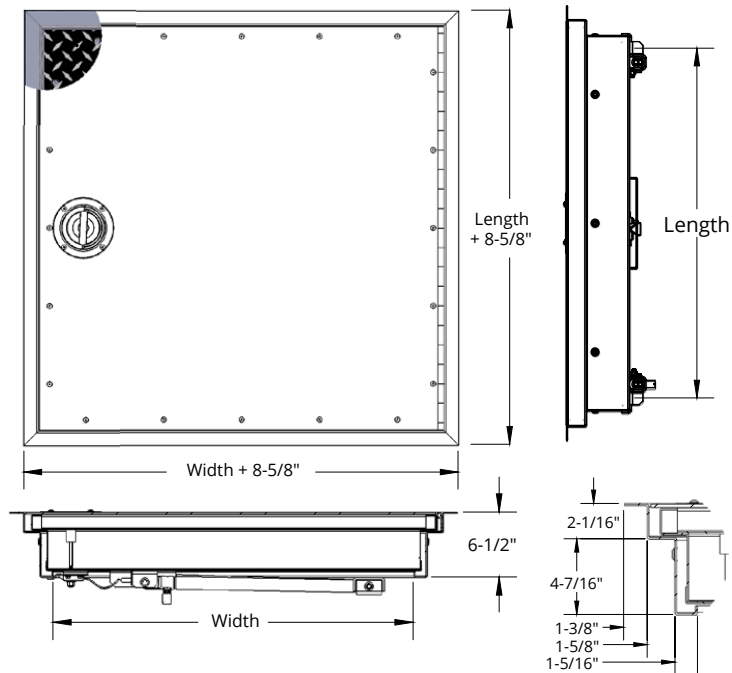


FLOOR DOOR -FHD SERIES - 1 HOUR FIRE-RATED FHD1R

Our FHD floor doors are designed to control the transmission of heat and flames when installed in a floor-ceiling assembly with a maximum temperature rise of 250 degrees Fahrenheit (121.1 degrees Celsius) for the specified rating periods of 1 hour.



SPECIFICATIONS:

Frame Material: 12 gauge (2.75 mm) galvalneal steel with ash gray primer

Door Material: 1/4" (6.35 mm) Aluminum tread plate with mill finish and 14 gauge (1.99mm) galvalneal steel frame and liner with ash gray primer

Insulation: High temperature ceramic fiber insulation

Hinge: Continuous stainless steel hinge

Latch: Stainless steel slam latch operated by a stainless steel recessed turn handle topside.

Spring/Cylinder: 316 stainless steel gas spring cylinders

Self Closing Mechanism: 165 degrees Fahrenheit (74 degrees Celsius) fusible link melts during fire automatically closing door without warning by releasing gas in cylinders. Not available on sizes larger than 42" (1067 mm) x 60" (1524 mm).

Installation Kit: Includes anchor straps for installing into concrete and screws for wood frame installations

Live Load: 150 lbs/sq ft (700 kg/sq metre)

Sizes:

Minimum Size: 26" x 24" (660 mm 610 mm)

Maximum Size 1 Hour: 64" x 60" (1626 mm x 1524 mm)

Clear Opening:

Size width up to 30": Width minus 12" (305 mm) x Length

Size width over 30": Width minus 8.25" (210 mm) x Length

FIRE-RATING:


QAI Laboratories listed and labeled to NFPA-288 for 1, 2 and 3 hours for horizontal fire door assemblies

Testing Standards: NFPA 288

COMMON SIZES FHD1R

QTY	ORDER SIZE W x L (Inside Opening)		APPROX WEIGHT		QTY	ORDER SIZE W x L (Inside Opening)		APPROX WEIGHT*	
	inches	mm	kg	lb		inches	mm	kg	lb
	26 x 24	660 x 610	58.97	130		36 x 48	914 x 1219	163.30	360
	30 x 30	762 x 762	85.28	188		36 x 54	914 x 1372	183.71	405
	30 x 48	762 x 1219	136.08	300		42 x 42	1067 x 1067	167.83	368
	36 x 24	914 x 762	81.65	180		42 x 60	1067 x 1524	233.60	525
	36 x 30	914 x 762	102.06	225		* 48 x 48	1219 x 1219	218	480
	36 x 36	914 x 914	123	270		* 64 x 60	1626 x 1524	363	800

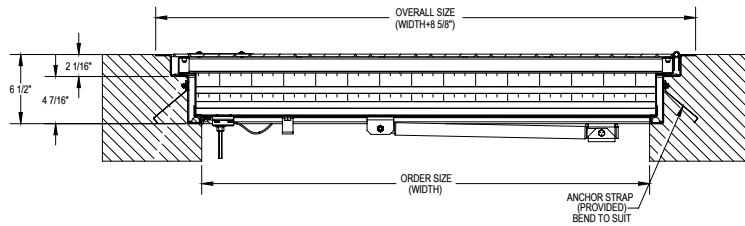
More Sizes Available Upon Request. *Self Closing Mechanism NOT available in this size.

	Distributor:		Project:	
	Contractor:		Approved By:	
Date:		Architect:		
Scale: N/A	Pages: 1 of 3	Item #:		

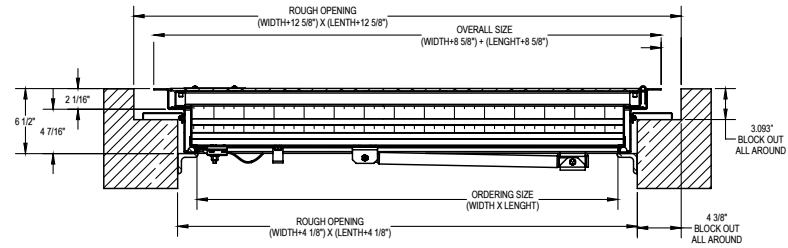
© 2024 Activar Construction Products Group, Inc. THE INFORMATION CONTAINED IN THIS DRAWING IS THE SOLE PROPERTY OF ACTIVAR CONSTRUCTION PRODUCTS, INC. ANY REPRODUCTION IN PART OR AS A WHOLE WITHOUT WRITTEN PERMISSION IS PROHIBITED. 1-05-2024

FLOOR DOOR - FHD SERIES - 1 HOUR FIRE-RATED FHD1R

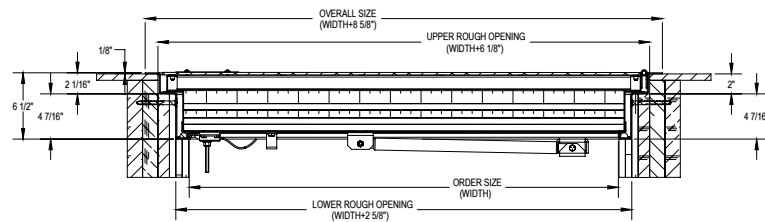
INSTALLATION: CONCRETE FHD SERIES - CAST-IN-PLACE



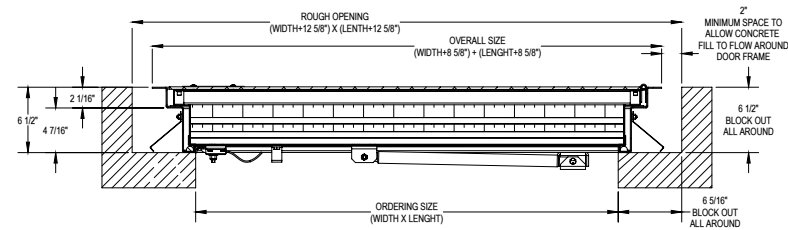
INSTALLATION: CONCRETE FHD SERIES - RETROFIT 1



INSTALLATION: WOOD FRAMING FHD SERIES (1 & 2 HOUR ONLY)



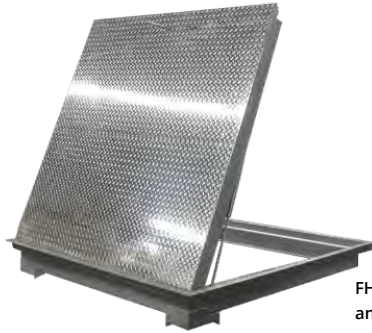
INSTALLATION: CONCRETE FHD SERIES - RETROFIT 2



See installation instructions for more detail

MADE-TO-ORDER FIRE-RATED FLOOR DOOR - FHD SERIES: INSULATED - EXAMPLE: FHD1RAT-3648U1PA

QTY	MODEL	FIRE-RATING	DOOR MATERIAL	WIDTH	LENGTH	LATCH / LOCK	FINISH	OPTIONS
	FHD	1R 1-Hour	AT (1/4" Aluminum Tread Plate; std) AP (1/4" Aluminum Smooth Plate) AR (3/16" Aluminum Smooth Plate Recessed) GT (3/16" Steel Tread Plate)			U1 (Recessed turn handle top slam latch bottom) U2 (Removable tool and plug top slam latch bottom) J2 (Detention slam lock # Brinks 7066K-RH keyed top, door knob bottom)	PA (Primer, ash gray on steel; Std)	BT (Bituminous coating on frame exterior exposed to concrete) PH (Padlock hasp on bottom) SN (No self-closing mechanism at 165F) YB (Door painted yellow with black letters: "FIRE DOOR DO NOT STORE MATERIALS/EQUIPMENT ON SURFACE")



FHD with Standard 1/4"(6.35 mm) Aluminum Tread Plate and Optional Removable Tool

FLOOR DOOR OPTIONAL MATERIAL, LOCKS, LATCHES, HARDWARE, AND COLOR



1/4" (6.35 mm) Aluminum Tread Plate (Standard)



3/16" (4.78 mm) Steel Tread Plate



1/4" (6.35 mm) Smooth Aluminum Plate



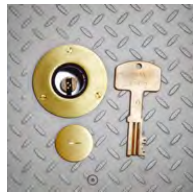
Smooth Aluminum Recessed for 3/16" (6.35 mm) to accept flooring



Painted Lettering: Door panel painted in optional yellow with "FIRE DOOR DO NOT STORE MATERIALS/EQUIPMENT ON SURFACE" in black lettering



Recessed Stainless Steel Turn Handle Topside (Standard)



Detention Lock showing Topside Lock and Key



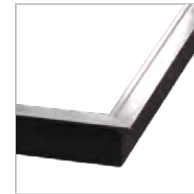
Detention Lock showing Underside Operable Knob



Padlock Hasp Underside



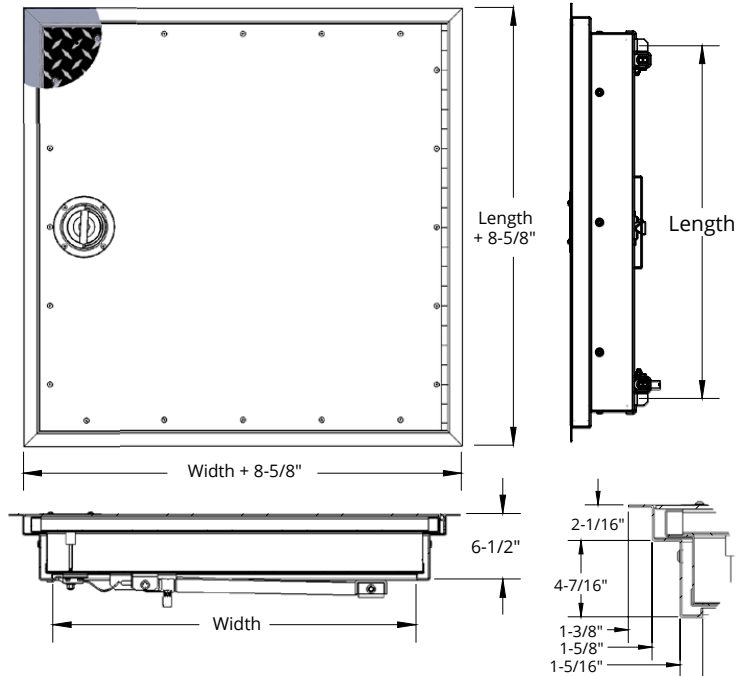
316 Stainless Steel Slam Latch with Topside Removable Tool and Underside Spoon Handle



Bituminous Coating

FLOOR DOOR - FHD SERIES - 2 HOUR FIRE-RATED FHD2R

Our FHD floor doors are designed to control the transmission of heat and flames when installed in a floor-ceiling assembly with a maximum temperature rise of 250 degrees Fahrenheit (121.1 degrees Celsius) for the specified rating periods of 2 hours.



SPECIFICATIONS:

Frame Material: 12 gauge (2.75 mm) galvaneal steel with ash gray primer

Door Material: 1/4" (6.35 mm) Aluminum tread plate with mill finish and 14 gauge (1.99mm) galvaneal steel frame and liner with ash gray primer

Insulation: High temperature ceramic fiber insulation

Hinge: Continuous stainless steel hinge

Latch: Stainless steel slam latch operated by a stainless steel recessed turn handle topside.

Spring/Cylinder: 316 stainless steel gas spring cylinders

Self Closing Mechanism: 165 degrees Fahrenheit (74 degrees Celsius) fusible link melts during fire automatically closing door without warning by releasing gas in cylinders. Not available on sizes larger than 42" (1067 mm) x 60" (1524 mm).

Installation Kit: Includes anchor straps for installing into concrete and screws for wood frame installations

Live Load: 150 lbs/sq ft (700 kg/sq metre)

Sizes:

Minimum Size: 26" x 24" (660 mm x 610 mm)

Maximum Size 2 Hour: 64" x 60" (1626 mm x 1524 mm)

Clear Opening:

Size width up to 30": Width minus 12" (305 mm) x Length

Size width over 30": Width minus 8.25" (210 mm) x Length


FIRE-RATING:

QAI Laboratories listed and labeled to NFPA-288 for 1, 2 and 3 hours for horizontal fire door assemblies

Testing Standards: NFPA 288

COMMON SIZES FHD2R									
QTY	ORDER SIZE W x L (Inside Opening)		APPROX WEIGHT		QTY	ORDER SIZE W x L (Inside Opening)		APPROX WEIGHT*	
	inches	mm	kg	lb		inches	mm	kg	lb
	26 x 24	660 x 610	58.97	130		36 x 48	914 x 1219	163.30	360
	30 x 30	762 x 762	85.28	188		36 x 54	914 x 1372	183.71	405
	30 x 48	762 x 1219	136.08	300		42 x 42	1067 x 1067	167.83	368
	36 x 24	914 x 762	81.65	180		42 x 60	1067 x 1524	233.60	525
	36 x 30	914 x 762	102.06	225		* 48 x 48	1219 x 1219	218	480
	36 x 36	914 x 914	123	270		* 64 x 60	1626 x 1524	363	800

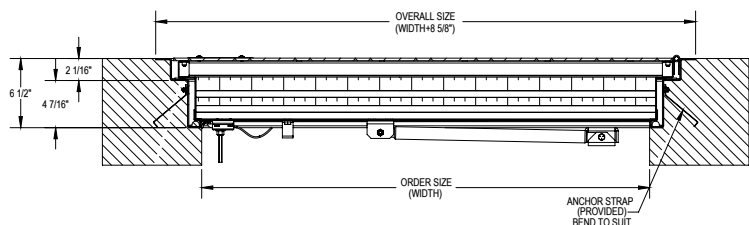
More Sizes Available Upon Request. *Self Closing Mechanism NOT available in this size.

 <p>CANADA ONLY: 604-433-4243 info@maxammetal.com maxammetal.com</p> <p><small>© 2024 Activar Construction Products Group, Inc. THE INFORMATION CONTAINED IN THIS DRAWING IS THE SOLE PROPERTY OF ACTIVAR CONSTRUCTION PRODUCTS, INC. ANY REPRODUCTION IN PART OR AS A WHOLE WITHOUT WRITTEN PERMISSION IS PROHIBITED.</small></p>	Distributor:	Project:
	Contractor:	Approved By:
Date:	Architect:	
Scale: N/A	Pages: 1 of 3	Item #:

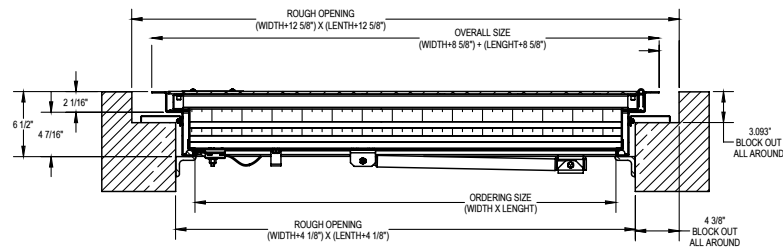
1-05-2024

FLOOR DOOR - FHD SERIES - 2 HOUR FIRE-RATED FHD2R

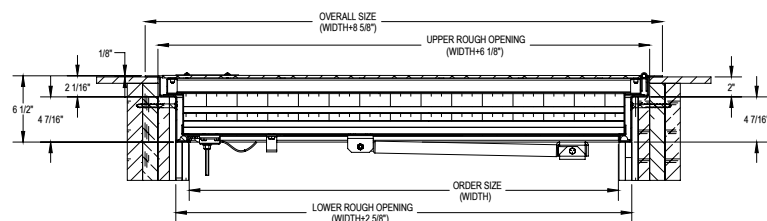
INSTALLATION: CONCRETE FHD SERIES - CAST-IN-PLACE



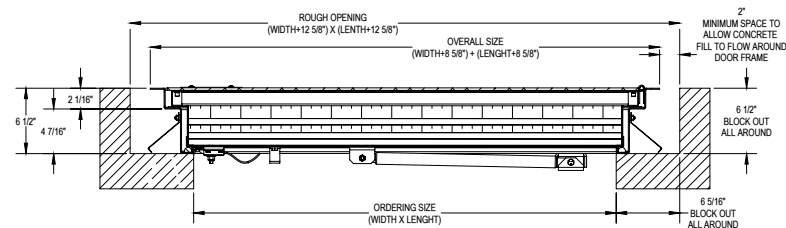
INSTALLATION: CONCRETE FHD SERIES - RETROFIT 1



INSTALLATION: WOOD FRAMING FHD SERIES (1 & 2 HOUR ONLY)



INSTALLATION: CONCRETE FHD SERIES - RETROFIT 2



See installation instructions for more detail

MADE-TO-ORDER FIRE-RATED FLOOR DOOR - FHD SERIES: INSULATED - EXAMPLE: FHD2RAT-3648U1PA

QTY	MODEL	FIRE-RATING	DOOR MATERIAL	WIDTH	LENGTH	LATCH / LOCK	FINISH	OPTIONS
	FHD	2R 2-Hour	AT (1/4" Aluminum Tread Plate; std) AP (1/4" Aluminum Smooth Plate) AR (3/16" Aluminum Smooth Plate Recessed) GT (3/16" Steel Tread Plate)			U1 (Recessed turn handle top slam latch bottom) U2 (Removable tool and plug top slam latch bottom) J2 (Detention slam lock # Brinks 7066K-RH keyed top, door knob bottom)	PA (Primer, ash gray on steel; Std)	BT (Bituminous coating on frame exterior exposed to concrete) PH (Padlock hasp on bottom) SN (No self-closing mechanism at 165F) YB (Door painted yellow with black letters: "FIRE DOOR DO NOT STORE MATERIALS/EQUIPMENT ON SURFACE")

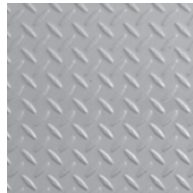


FHD with Standard 1/4"(6.35 mm) Aluminum Tread Plate and Optional Removable Tool

FLOOR DOOR OPTIONAL MATERIAL, LOCKS, LATCHES, HARDWARE, AND COLOR



1/4" (6.35 mm) Aluminum Tread Plate (Standard)



3/16" (4.78 mm) Steel Tread Plate



1/4" (6.35 mm) Smooth Aluminum Plate



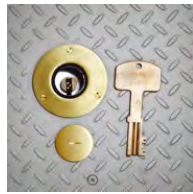
Smooth Aluminum Recessed for 3/16" (6.35 mm) to accept flooring



Painted Lettering: Door panel painted in optional yellow with "FIRE DOOR DO NOT STORE MATERIALS/EQUIPMENT ON SURFACE" in black lettering



Recessed Stainless Steel Turn Handle Topside (Standard)



Detention Lock showing Topside Lock and Key



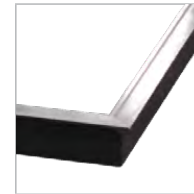
Detention Lock showing Underside Operable Knob



Padlock Hasp Underside



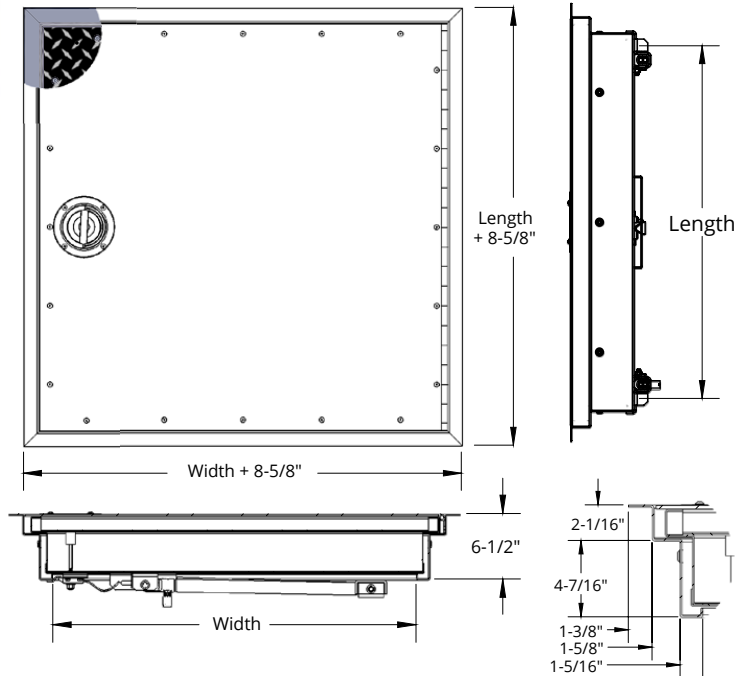
316 Stainless Steel Slam Latch with Topside Removable Tool and Underside Spoon Handle



Bituminous Coating

FLOOR DOOR - FHD SERIES - 3 HOUR FIRE-RATED FHD3R

Our FHD floor doors are designed to control the transmission of heat and flames when installed in a floor-ceiling assembly with a maximum temperature rise of 250 degrees Fahrenheit (121.1 degrees Celsius) for the specified rating periods of 3 hours.



SPECIFICATIONS:

Frame Material: 12 gauge (2.75 mm) galvaneal steel with ash gray primer

Door Material: 1/4" (6.35 mm) Aluminum tread plate with mill finish and 14 gauge (1.99mm) galvaneal steel frame and liner with ash gray primer

Insulation: High temperature ceramic fiber insulation

Hinge: Continuous stainless steel hinge

Latch: Stainless steel slam latch operated by a stainless steel recessed turn handle topside.

Spring/Cylinder: 316 stainless steel gas spring cylinders

Self Closing Mechanism: 165 degrees Fahrenheit (74 degrees Celsius) fusible link melts during fire automatically closing door without warning by releasing gas in cylinders. Not available on sizes larger than 42" (1067 mm) x 60" (1524 mm).

Installation Kit: Includes anchor straps for installing into concrete and screws for wood frame installations

Live Load: 150 lbs/sq ft (700 kg/sq metre)

Sizes:

Minimum Size: 26" x 24" (660 mm x 610 mm)

Maximum Size 3 Hour: 42" x 60" (1067 mm x 1524 mm) or 48" x 48" (1219 mm x 1219 mm)

Clear Opening:

Size width up to 30": Width minus 12" (305 mm) x Length

Size width over 30": Width minus 8.25" (210 mm) x Length


FIRE-RATING:

QAI Laboratories listed and labeled to NFPA-288 for 1, 2 and 3 hours for horizontal fire door assemblies

Testing Standards: NFPA 288

COMMON SIZES FHD3R									
QTY	ORDER SIZE W x L (Inside Opening)		APPROX WEIGHT		QTY	ORDER SIZE W x L (Inside Opening)		APPROX WEIGHT*	
	inches	mm	kg	lb		inches	mm	kg	lb
	26 x 24	660 x 610	58.97	130		36 x 48	914 x 1219	163.30	360
	30 x 30	762 x 762	85.28	188		36 x 54	914 x 1372	183.71	405
	30 x 48	762 x 1219	136.08	300		42 x 42	1067 x 1067	167.83	368
	36 x 24	914 x 762	81.65	180		42 x 60	1067 x 1524	233.60	525
	36 x 30	914 x 762	102.06	225		* 48 x 48	1219 x 1219	218	480
	36 x 36	914 x 914	123	270					

More Sizes Available Upon Request. *Self Closing Mechanism NOT available in this size.

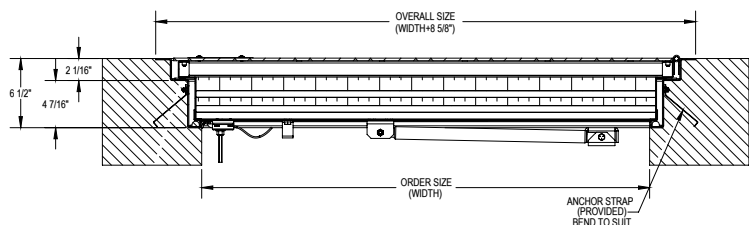
	Distributor:		Project:	
	Contractor:		Approved By:	
Date:		Architect:		
Scale: N/A	Pages: 1 of 3	Item #:		

CANADA ONLY: 604-433-4243 info@maxammetal.com maxammetal.com

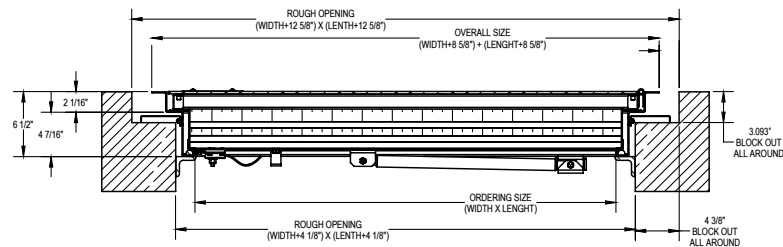
© 2024 Activar Construction Products Group, Inc. THE INFORMATION CONTAINED IN THIS DRAWING IS THE SOLE PROPERTY OF ACTIVAR CONSTRUCTION PRODUCTS, INC. ANY REPRODUCTION IN PART OR AS A WHOLE WITHOUT WRITTEN PERMISSION IS PROHIBITED. 1-05-2024

FLOOR DOOR - FHD SERIES - 3 HOUR FIRE-RATED FHD3R

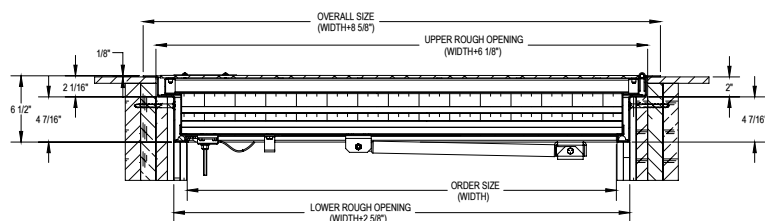
INSTALLATION: CONCRETE FHD SERIES - CAST-IN-PLACE



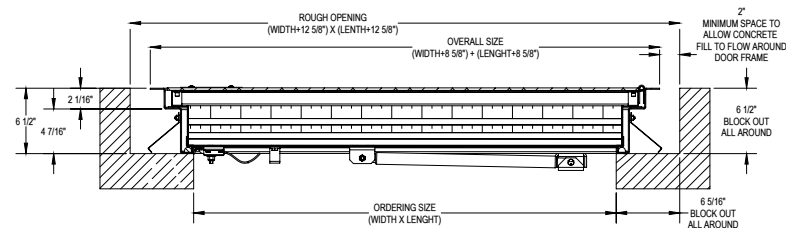
INSTALLATION: CONCRETE FHD SERIES - RETROFIT 1



INSTALLATION: WOOD FRAMING FHD SERIES (1 & 2 HOUR ONLY)



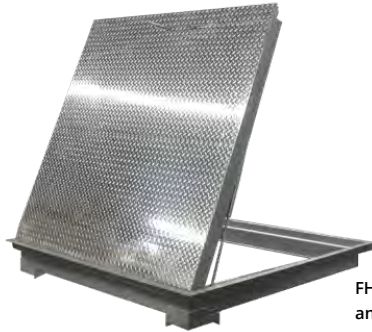
INSTALLATION: CONCRETE FHD SERIES - RETROFIT 2



See installation instructions for more detail

MADE-TO-ORDER FIRE-RATED FLOOR DOOR - FHD SERIES: INSULATED - EXAMPLE: FHD3RAT-3648U1PA

QTY	MODEL	FIRE-RATING	DOOR MATERIAL	WIDTH	LENGTH	LATCH / LOCK	FINISH	OPTIONS
	FHD	3R 3-Hour	AT (1/4" Aluminum Tread Plate; std) AP (1/4" Aluminum Smooth Plate) AR (3/16" Aluminum Smooth Plate Recessed) GT (3/16" Steel Tread Plate)			U1 (Recessed turn handle top slam latch bottom) U2 (Removable tool and plug top slam latch bottom) J2 (Detention slam lock # Brinks 7066K-RH keyed top, door knob bottom)	PA (Primer, ash gray on steel; Std)	BT (Bituminous coating on frame exterior exposed to concrete) PH (Padlock hasp on bottom) SN (No self-closing mechanism at 165F) YB (Door painted yellow with black letters: "FIRE DOOR DO NOT STORE MATERIALS/EQUIPMENT ON SURFACE")



FHD with Standard 1/4"(6.35 mm) Aluminum Tread Plate and Optional Removable Tool

FLOOR DOOR OPTIONAL MATERIAL, LOCKS, LATCHES, HARDWARE, AND COLOR



1/4" (6.35 mm) Aluminum Tread Plate (Standard)



3/16" (4.78 mm) Steel Tread Plate



1/4" (6.35 mm) Smooth Aluminum Plate



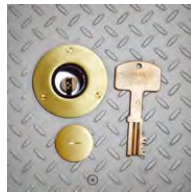
Smooth Aluminum Recessed for 3/16" (6.35 mm) to accept flooring



Painted Lettering: Door panel painted in optional yellow with "FIRE DOOR DO NOT STORE MATERIALS/EQUIPMENT ON SURFACE" in black lettering



Recessed Stainless Steel Turn Handle Topside (Standard)



Detention Lock showing Topside Lock and Key



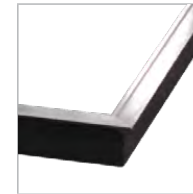
Detention Lock showing Underside Operable Knob



Padlock Hasp Underside



316 Stainless Steel Slam Latch with Topside Removable Tool and Underside Spoon Handle



Bituminous Coating