

Drywall Access Panel with Fully Detachable Hatch

Aluminum frame, with drywall inlay, for wall applications - System F2 DF

NEW



Ready-to-paint door leaf

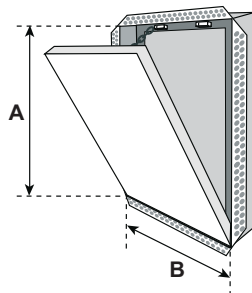
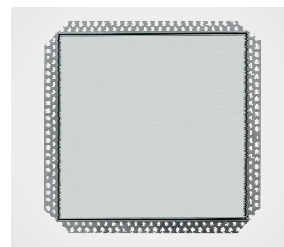
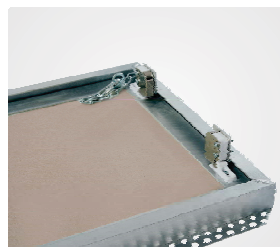
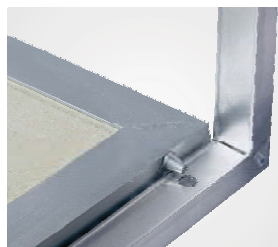
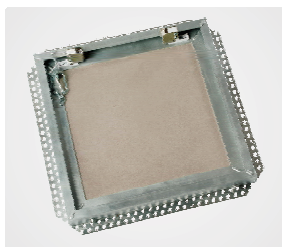
Description

The access panel consists of a welded aluminum frame and is available with 1/2" (12.7 mm) or 5/8" (15.9 mm) inlaid drywall and two latches.

Both an outer and an inner frame assembly consists of high grade aluminum which is bonded with a special welding process. For sizes 12" x 12" (305 mm x 305 mm) and up the access panels are equipped with a safety-system to prevent accidental opening. This safety system must be reattached if the hatch is removed.

The reveal of 1/16 of an inch (1.59 mm) is visible between the outer frame and door hatch. The concealed snap locks open the access panel when pressure is applied to the spring loaded latch side.

Fully
Detachable Hatch



Customized solutions

Customized sizes can be produced in every dimension upon request.

Drywall insert with screws on larger sizes than 24" x 24" (610 mm x 610 mm).

Advantages of FF Systems Panels

- Superior engineering & innovative design
- Fast delivery
- Quick and easy installation
- Solid aluminum frame
- Flush installation in walls
- Available in moisture / mildew resistant green board and cement board

FF Systems
Access Panels

System F2	Dimensions	
Code	A inch mm	B inch mm
DF203203G127	8" 203	8" 203
DF305305G127	12" 305	12" 305
DF406406G127	16" 406	16" 406
DF508508G127	20" 508	20" 508
DF610610G127	24" 610	24" 610

All standard sizes are available in 1/2" (12.7 mm) or 5/8" (15.9 mm) drywall.

Options

SD	Screwdriver operated cam latch
FS	Screwdriver operated four-square cam latch
Z	Round Cylinder Lock with Key
M	Mortise Cylinder Lock Preparation
H	Hex Head Cam Latch
P	Pinned Hex Head Cam Latch

Rough opening is door size + 3/8" (9 mm)