

November 2008

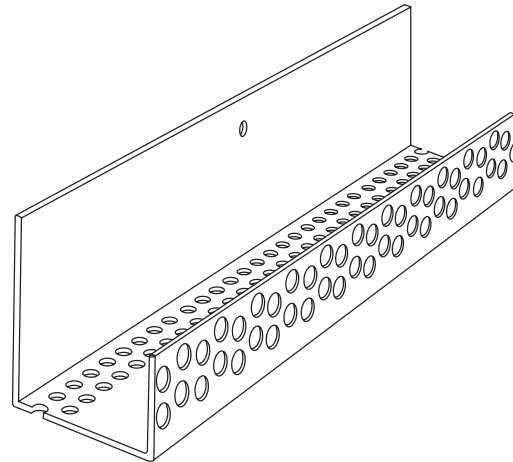
Direct Applied Finishes

Section: 07240

Vent Screen TRAC

Product Number	Dimensions/Descriptions	Pieces Per Box
VST-58	Trac for EIFS systems with double row of drainage holes at the rear of the TRAC. 1-1/8" (29 mm) return face flange. 4-hole pattern for superior bond of base coat to foam board. 2" (51 mm) wide nailing flange, with nail attachment holes set at 4" (102 mm) o.c.	35

10' (3 m) Lengths



Application:

A vent screen trac for use with Direct Applied systems. The VST has a double row of drainage holes that aid in carrying moisture away from the structure. Its 2" (51 mm) wide nailing flange, and nail holes set every 4" (102 mm) o.c. provide secure attachment. It also provides superior bond of base coat to foam board.

Specification:

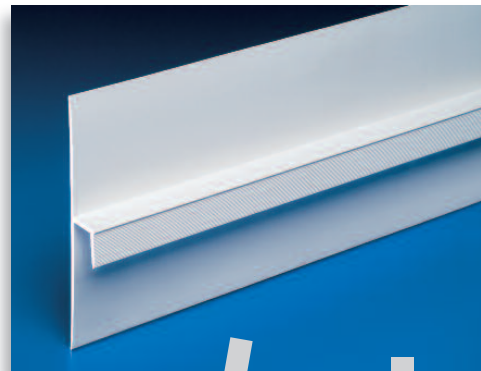
Vent Screen Trac shall be Plastic Components, Inc. #VST-58. All exterior accessories shall conform to ASTM standards D1784, C1063 and D4216. They shall be used where specified by the architect and installed per industry standards.

Transitional Floor Line Bead

Product Number	Dimensions/Descriptions	Pieces Per Box
1623	For 5/8" (16 mm) board. Upper flange is 2-1/2" (64 mm). Bottom flange is 3" (76 mm).	15

NEW!

10' (3 m) Lengths



Application:

Transitional Floor Line Bead for 5/8" board was designed to protect the bottom board edge from moisture.

Specification:

Transitional Floor Line Bead shall be Plastic Components, Inc. #1623. All exterior accessories shall conform to ASTM standards D1784, C1063 and D4216. They shall be used where specified by the architect and installed per industry standards.

1

2

Caulk all butt joints, intersections and ends.



PLASTIC PC[™]
COMPONENTS inc.