

## SUBMITTAL: EQUIPMENT HATCHES EHA, EHG & EHGA

**Insulation:** The lid has 1" fiberglass insulation in the space between the exterior cover and liner.

**Construction:** Hatch is 14 gauge galvanized steel (EHG) or .090 aluminum (EHA) fully welded and ground smooth for weather tightness. Includes 12" high curb and 4" wide flange for securing to roof deck. The cover includes a 14 gauge galvanized steel or .090 aluminum exterior and metal liner with a continuous bulb-neoprene door seal. Oversize doors may be spliced.

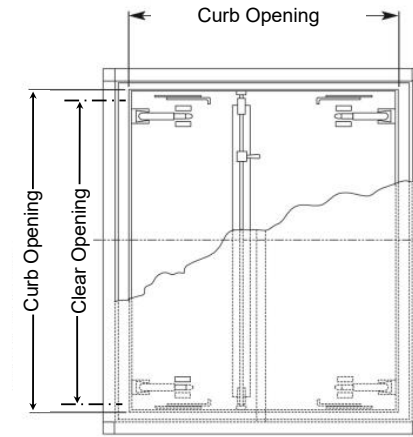
**Hardware:** Hardware includes heavy-duty galvanized hinges, compression spring automatic hold-open and operating arms with red vinyl handlegrip. Standard lift springs are pressure intensifiers, or adjustable torsion spring are provided for oversized models. Lid hardware has a 2 point universal spring latch, and exterior and interior handles with integral padlock.

**Finish:** 2 coats silver prime coat.

**Options:**

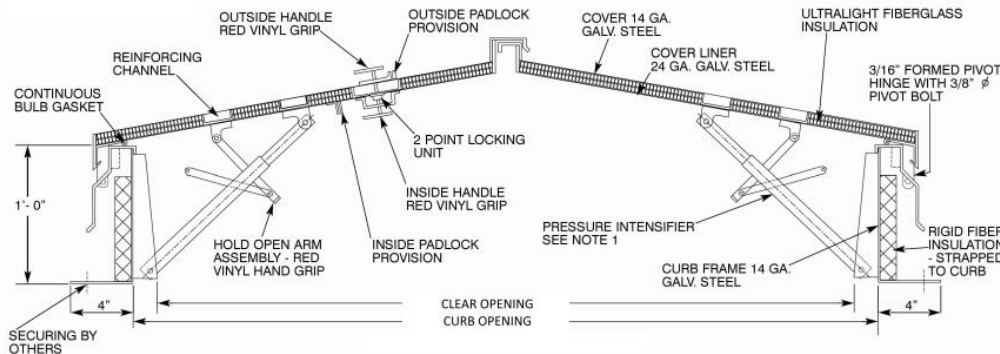
- Acrylic Dome Style Hatch - See Separate Submittal DEHA & DEHG
- \_\_\_\_ (RHWL) Gravity-operated battery-powered flashing warning light
- Polyiso insulation - see separate submittal

Custom Sizes & Finishes Available - Consult Customer Service



PLAN VIEW

MODEL EHG-1 SHOWN BELOW



| QTY                         | MODEL   | CURB OPENING | CLEAR OPENING |
|-----------------------------|---------|--------------|---------------|
|                             | EHA-1   | 72" X 96"    | 64" x 88"     |
|                             | EHA-2   | 60" X 120"   | 52" x 112"    |
|                             | EHA-3   | 120" X 120"  | 112" x 112"   |
|                             | EHA-4   | 144" X 144"  | 136" x 136"   |
|                             | EHG-1   | 72" X 96"    | 64" x 88"     |
|                             | EHGA-2* | 60" X 120"   | 52" x 112"    |
|                             | EHGA-3* | 120" X 120"  | 112" x 112"   |
|                             | EHGA-4* | 144" X 144"  | 136" x 136"   |
| Custom Sizes Also Available |         |              |               |

\* Steel Curb with Aluminum Cover

|   |              |  |
|---|--------------|--|
| <p>EHG, EHA RHWL ARE TRADEMARKS OF ACTIVAR<br/>ALWAYS DOWNLOAD THE MOST CURRENT SUBMITTAL BEFORE ORDERING</p> | Distributor: | Quantity:  |
|   | Contractor:  | Approved By:                                     |
|   | Model #:     | Architect:                                       |
|   | Project:     | Date: © Activar Construction Products, Inc. 2020 |
| 2/4/2020  |              |  |