

## SUBMITTAL: DOUBLE LEAF DOMED SMOKE VENT - UDFV

**Certifications:** The smoke vents are equipped with a UL listed 165° fusible link for automatic operation.

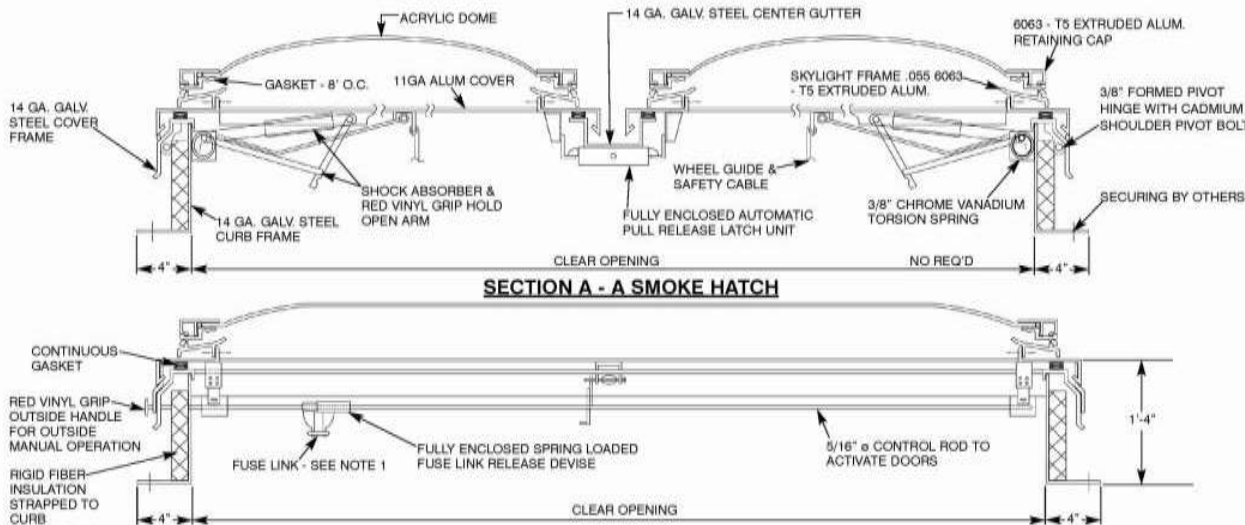
**Construction:** Dome frame is a minimum thickness of .072 aluminum and provides a self-contained sloping condensation and weepage gutter for drainage. Covers are one piece acrylic dome (either white translucent or clear). The 14 gauge steel dome retaining frame is secured to the 14 gauge galvanized steel curb frame. The galvanized steel curb and curb frame fully welded and ground smooth, Gasketed, and insulated for weather tightness.

**Operation:** Torsion spring drives open the covers automatically. Shock absorbers control the speed of the leaves as they open. The fusible link can be quickly and easily replaced.



**Hardware:** Heavy gauge aluminum 3/16" pivot hinges. Pull handles are provided for exterior or interior manual operation.

**Finish:** 2 coats prime coat.

**Options:** \_\_\_\_\_(RHWL) Gravity-operated battery-powered flashing warning light \_\_\_\_\_(STH) Saf-T-Hatch railing  
Custom Sizes & Finishes Available - Contact Customer Service



QTY	MODEL	CLEAR OPENING
		Width x Length (hinge side)
	UDFV-1	48" x 48"
	UDFV-2	48" x 72"
	UDFV-3	48" x 90"
	UDFV-4	48" x 96"
	UDFV-5	60" x 60"
	UDFV-6	60" x 96"
	Other Sizes	

 <b>JL INDUSTRIES</b>	 <b>ACTIVAR</b> <small>INC.</small> <small>www.activarcpg.com</small> <b>Construction Products Group</b>	Distributor:	Quantity:
		Contractor:	Approved By:
		Model #:	Architect:
		Project:	Date: