

SUBMITTAL: CROWNLINE™ VALVE & HOSE CABINETS - ALUMINUM

Crownline Cabinets Provide A Wide Selection of Door Styles, Glazing and Sizes. These Durable Cabinets are Designed to Industry Standards for Fire Department Valves, Fire Hose Rack Units and Extinguishers.

Door & Trim: Clear anodized aluminum. 1-3/4" Trim on face and door. These flush cabinet doors are mounted in a 5/8" door stop, are attached by a continuous hinge and are equipped with zinc-plated handle and roller catch for all non-locking doors. Theft-deterrent SAF-T-LOK™ also available.

Trim Style and Depth: 1-3/4" face trim on frame and 1-1/4" trim on door. *Recessed* - 3/8" flat trim. *Semi-recessed* - 1-1/4" Square Edge or 2-1/2" Rolled Edge. Rolled edge models are constructed of mechanically-joined extrusions (see photo). *Surface mounted* - Square edge. See separate submittal for trimless.

Tub: CRS, white powder-coat finish standard.

Knockouts: K.O.'s are provided on both sides of the cabinet. K.O.'s on left side will be located using "J" dimension, K.O.'s on right side using "K" dimension and may be offset from K.O.'s on "J" side of cabinet. Models 6027 & 6227 - Specify knockout location. Provided on surface mounted cabinets by request. Custom location K.O.'s available.

Special Features: Models 8025, 8026, 8027 & 8023 have a shelf 12" from the bottom of the cabinet and are designed to hold a fire extinguisher plus FD valve or other accessory. Those models can also be ordered without shelf to allow for lower mounting height of valve piping to meet NFPA10.

Fire-Rated Option Available: Yes - [See separate submittal.](#)

STEP 1: SELECT MODEL NUMBER, TRIM & QUANTITY (Refer to Chart on Page 2)

STEP 2: SELECT DOOR STYLE WITH HANDLE (Check one box below)

- | | |
|---|--|
| <input type="checkbox"/> F Full Glazing | <input type="checkbox"/> L22 Solid with SAF-T-LOK™ |
| <input type="checkbox"/> G Full Glazing with SAF-T-LOK™ | <input type="checkbox"/> V Vertical Duo |
| <input type="checkbox"/> D Horizontal Duo Panel | <input type="checkbox"/> W Vertical Duo with SAF-T-LOK™ |
| <input type="checkbox"/> E Horizontal Dual Panel with SAF-T-LOK™ | <input type="checkbox"/> B10 Small Acrylic View Window & SAF-T-LOK™ |
| <input type="checkbox"/> A Center Duo Panel with SAF-T-LOK™ | <input type="checkbox"/> L24 Solid with Cylinder Lock & No Handle |
| <input type="checkbox"/> S21 Solid Door | |
- [View Door Styles](#)

ADA Cabinet Mounting Height: Standard Pull on G, E, W, L22 and B Door Styles with Saf-T-Lok are 3 5/8" Higher than Door Center, so Allow for that When Mounting Cabinet. Standard Pull with No Lock or ADA Recessed Pull are Centered on Door.

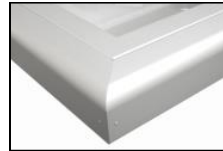
STEP 3: SELECT DOOR GLAZING

(Check one box below)

- | | |
|--|---|
| <input type="checkbox"/> 10 Clear Acrylic | <input type="checkbox"/> 16 Gray Acrylic |
| <input type="checkbox"/> 13 Clear Wire Glass with Safety Film | <input type="checkbox"/> 17 Clear Tempered Glass |
| <input type="checkbox"/> 15 Bronze Acrylic | <input type="checkbox"/> 18 Laminated Safety Glass |

STEP 4: OPTIONAL FEATURES AT ADDITIONAL COST:

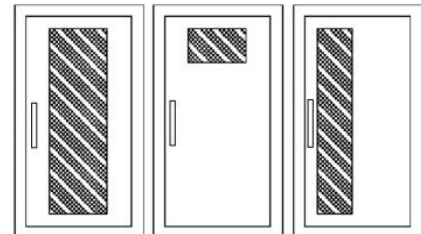
- | | | |
|---|--|--|
| <input type="checkbox"/> Dark Bronze Anodized Door & Trim (pull to match) | <input type="checkbox"/> P6 Polished Chrome Lever Handle | <input type="checkbox"/> Black Vertical FE Letters LDCVBFE |
| <input type="checkbox"/> Aluminum Tub - Clear Anodized | <input type="checkbox"/> FDVO Decal "Fire Dept Valve" Octagonal 6 x 6" | <input type="checkbox"/> Red Vertical FE Letters LDCVRFE |
| <input type="checkbox"/> Optional Tub Color: ___ Black ___ Red | <input type="checkbox"/> 1403 Decal "Fire Hose" Vert. Blk Bkgd, Red Letters 4 x 9" | <input type="checkbox"/> White Vertical FE Letters LDCVWFE |
| <input type="checkbox"/> Futura "Fire" Handle ___ Mill ___ Red ___ White | <input type="checkbox"/> LDCHFVDV-R Diecut "Fire Dept Valve" Horiz. 10-1/4 x 4-3/8" | <input type="checkbox"/> Black Horizontal FE Letters LDCHBFE |
| <input type="checkbox"/> 0710 Flush Pull Handle Pulls & Levers | <input type="checkbox"/> LDCVRFVDV Diecut "Fire Dept Valve" Vert 3/4: x 17" | <input type="checkbox"/> Red Horizontal FE Letters LDCHRFE |
| <input type="checkbox"/> SA Strobe Alarm (surface mount models) | Etched or Engraved Lettering - Metal/Glass | <input type="checkbox"/> White Horizontal FE Letters LDCHWFE |
| <input type="checkbox"/> CA Commander Alarm | Other Decals & Die Lettering | <input type="checkbox"/> Fire Extinguishers, Fire Hose Racks |
| <input type="checkbox"/> BA Brigadier Alarm Alarms | BIM OBJECTS FOR REVIT® PLATFORM | <input type="checkbox"/> View Anodized Bronze Colors |
- Attach separate submittal for speciality lettering



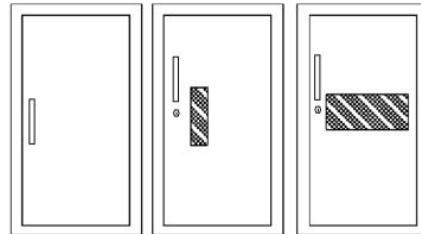
2-1/2" Rolled Edge



6225A10



F - Full glass with pull handle and Saf-T-Lok (Not Shown)
 D - Horizontal duo panel with pull handle and Saf-T-Lok. (Not Shown)
 V - Vertical duo panel with pull handle and Saf-T-Lok. (Not Shown)



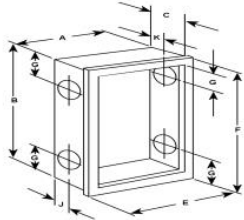
S21 - Solid with pull handle and Saf-T-Lok
 B10 - Vertical acrylic view window 5" x 5" with pull handle and Saf-T-Lok
 A - Horizontal duo panel with pull handle and Saf-T-Lok



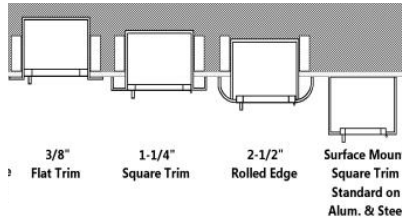
L22 - Solid with pull handle and Saf-T-Lok
 L24 - Solid with cylinder key lock/no pull (L22,24 not shown)
 A - Horizontal duo panel with pull handle and Saf-T-Lok

	Distributor:	Quantity:
	Contractor:	Approved By:
	Model #:	Architect:
	Project:	Date:
8/17/2017		

SUBMITTAL: CROWLINE VALVE & HOSE CABINETS - ALUMINUM



• Cabinets that ADA Depth Cabinets



ADA Cabinet Mounting Height: Standard Pull on G, E, W, L22 and B Door Styles with Saf-T-Lok are 35/8\"/>

BIM Objects for REVIT® Platform 8000 Models

BIM Objects for REVIT® Platform 6000/ 7000 Models

TRIM & DOOR MATERIAL & SERIES		TUB I.D. W x H x D in Inches			FRAME O.D.		RECESSED WALL OPENING			KNOCKOUT LOCATIONS			RECOMMENDED HOSE RACK, FD VALVES & EXTINGUISHERS	
QTY	#	TRIM STYLE	A	B	C	E	F	Width	Height	Depth	J	G		K
Cabinets with Hose Rack & Extinguisher or FD Valve— ADA Cabinets Indicated in Blue & •														
	6025	FLAT TRIM 3/8" •	24	30	6	27 3/8	33 3/8	25	31	5 7/8	2 1/2	4	2 1/2	HOSE RACK: 1- 1/2" x 1-1/2" Hose Rack Unit, 50 or 75' Hose (3005, 3105, 3007, 3107) plus Cosmic 2.5 or Galaxy 2.5-5 lb Exting.
	6026	1-1/4" SQUARE EDGE •	24	30	6	27 3/8	33 3/8	25	31	4 7/8	2 1/2	4	2 1/2	
	6027	2-1/2" ROLLED EDGE •	24	30	6	27 3/8	33 3/8	25	31	4 1/4	Specify When Ordering			
	6023	SURFACE MOUNTED	27 3/16	33 3/16	6 1/2	27 3/8	33 3/8	-	-	-	Upon Request			
	6225	FLAT TRIM 3/8" •	24	34 3/4	6	27 3/8	38 1/8	25	35 3/4	5 7/8	2 1/2	4	2 1/2	HOSE RACK: 1- 1/2" x 1-1/2" Hose Rack Unit - 100' Hose (3010 or 3110) plus Cosmic 2.5 or Galaxy 2.5-5 lb Extinguisher
	6226	1-1/4" SQUARE EDGE •	24	34 3/4	6	27 3/8	38 1/8	25	35 3/4	4 7/8	2 1/2	4	2 1/2	
	6227	2-1/2" ROLLED EDGE •	24	34 3/4	6	27 3/8	38 1/8	25	35 3/4	4 1/4	Specify When Ordering			
	6223	SURFACE MOUNTED	27 3/16	37 15/16	6 1/2	27 3/8	38 1/8	-	-	-	Upon Request			
	6125	FLAT TRIM 3/8" •	24	30	8	27 3/8	33 3/8	25	31	7 7/8	4	4	2 1/2	HOSE RACK: 2-1/2" x 1-1/2" Hose Rack Unit 50 or 75' Hose (3205, 3207)
	6126	1-1/4" SQUARE EDGE •	24	30	8	27 3/8	33 3/8	25	31	6 7/8	4	4	2 1/2	
	6127	2-1/2" ROLLED EDGE •	24	30	8	27 3/8	33 3/8	25	31	6 1/4	4	4	2 1/2	
	6123	SURFACE MOUNTED	27 3/16	33 3/16	8 1/2	27 3/8	33 3/8	-	-	-	Upon Request			
	6425	FLAT TRIM 3/8" •	24	34 3/4	8	27 3/8	38 1/8	25	35 3/4	7 7/8	4	4	2 1/2	HOSE RACK: 2-1/2" x 1-1/2" Hose Rack Unit - 100' Hose (3210 Series)
	6426	1-1/4" SQUARE EDGE •	24	34 3/4	8	27 3/8	38 1/8	25	35 3/4	6 7/8	4	4	2 1/2	
	6427	2-1/2" ROLLED EDGE •	24	34 3/4	8	27 3/8	38 1/8	25	35 3/4	6 1/4	4	4	2 1/2	
	6423	SURFACE MOUNTED	27 3/16	37 15/16	8 1/2	27 3/8	38 1/8	-	-	-	Upon Request			
	6625	FLAT TRIM 3/8" •	24	38 3/4	8	27 3/8	42 1/8	25	39 3/4	7 7/8	4	4	2 1/2	HOSE RACK: 2-1/2" x 1-1/2" Hose Rack Unit 125' Hose (3212 Series)
	6626	1-1/4" SQUARE EDGE •	24	38 3/4	8	27 3/8	42 1/8	25	39 3/4	6 7/8	4	4	2 1/2	
	6627	2-1/2" ROLLED EDGE •	24	38 3/4	8	27 3/8	42 1/8	25	39 3/4	6 1/4	4	4	2 1/2	
	6623	SURFACE MOUNTED	27 3/16	41 15/16	8 1/2	27 3/8	42 1/8	-	-	-	Upon Request			
	6325	FLAT TRIM 3/8" •	30	30	8	33 3/8	33 3/8	31	31	7 7/8	4	4	2 1/2	HOSE RACK & FD VALVE/EXT 50' or 75' Hose Rack Unit 1-1/2" or 2-1/2" Valve/Exting. Except Sentinel 15-20, 272
	6326	1-1/4" SQUARE EDGE •	30	30	8	33 3/8	33 3/8	31	31	6 7/8	4	4	2 1/2	
	6327	2-1/2" ROLLED EDGE •	30	30	8	33 3/8	33 3/8	31	31	6 1/4	4	4	2 1/2	
	6323	SURFACE MOUNTED	33 3/16	33 3/16	8 1/2	33 3/8	33 3/8	-	-	-	Upon Request			
	6525	FLAT TRIM 3/8" •	32 3/4	34 3/4	8	36 1/8	38 1/8	33 3/4	35 3/4	7 7/8	4	4	2 1/2	HOSE RACK & FD VALVE OR EXTINGUISHER: Hose Rack Unit 1-1/2" or 2-1/2" Valve/100' Extinguisher. Except Sentinel 15-20, 272
	6526	1-1/4" SQUARE EDGE •	32 3/4	34 3/4	8	36 1/8	38 1/8	33 3/4	35 3/4	6 7/8	4	4	2 1/2	
	6527	2-1/2" ROLLED EDGE •	32 3/4	34 3/4	8	36 1/8	38 1/8	33 3/4	35 3/4	6 1/4	4	4	2 1/2	
	6523	SURFACE MOUNTED	35 15/16	37 15/16	8 1/2	36 1/8	38 1/8	-	-	-	Upon Request			
	7225	FLAT TRIM 3/8" •	32 3/4	38 3/4	8	36 1/8	42 1/8	33 3/4	39 3/4	7 7/8	4	4	2 1/2	HOSE RACK & FD VALVE/EXT 125' Hose Rack Unit 1-1/2" or 2-1/2" Valve/ Extinguisher Except Sentinel 15-20, 272
	7226	1-1/4" SQUARE EDGE •	32 3/4	38 3/4	8	36 1/8	42 1/8	33 3/4	39 3/4	6 7/8	4	4	2 1/2	
	7227	2-1/2" ROLLED EDGE •	32 3/4	38 3/4	8	36 1/8	42 1/8	33 3/4	39 3/4	6 1/4	4	4	2 1/2	
	7223	SURFACE MOUNTED	35 15/16	41 15/16	8 1/2	36 1/8	42 1/8	-	-	-	Upon Request			
Cabinets for Fire Department Valves														
	8525	FLAT TRIM 3/8" •	18	18	8	21 3/8	21 3/8	19	19	7 7/8	4	9	2 1/2	FIRE DEPARTMENT VALVE: 1-1/2" or 2-1/2" Fire Department Valve with Cap and Chain
	8526	1-1/4" SQUARE EDGE •	18	18	8	21 3/8	21 3/8	19	19	6 7/8	4	9	2 1/2	
	8527	2-1/2" ROLLED EDGE •	18	18	8	21 3/8	21 3/8	19	19	6 1/4	4	9	2 1/2	
	8523	SURFACE MOUNTED	21 3/16	21 3/16	8 1/2	21 3/8	21 3/8	-	-	-	Upon Request			
	8425	FLAT TRIM 3/8" •	18	18	10	21 3/8	21 3/8	19	19	9 7/8	5	9	5	DUAL SIDE BY SIDE FIRE DEPARTMENT VALVE & EXTINGUISHER OR 2 FIRE DEPARTMENT VALVES: 1-1/2" or 2-1/2" FD Valve w/Cap and Chain Plus Extinguisher - Cosmic & Galaxy 2.5-10, Mercury 2.5-11, Grenadier, Saturn 15-25, Sentinel 5
	8426	1-1/4" SQUARE EDGE •	18	18	10	21 3/8	21 3/8	19	19	8 7/8	5	9	5	
	8427	2-1/2" ROLLED EDGE •	18	18	10	21 3/8	21 3/8	19	19	8 1/4	5	9	5	
	8423	SURFACE MOUNTED	21 3/16	21 3/16	10 1/2	21 3/8	21 3/8	-	-	-	Upon Request			
	8725	FLAT TRIM 3/8" •	26	26	8	29 3/8	29 3/8	27	27	7 7/8	4	13	2 1/2	DUAL EXTINGUISHER & FD VALVE CABINET W/SHELF: Shelf is 12" from bottom. Any Exting. Except Sentinel 15-20, 272
	8726	1-1/4" SQUARE EDGE •	26	26	8	29 3/8	29 3/8	27	27	6 7/8	4	13	2 1/2	
	8727	2-1/2" ROLLED EDGE •	26	26	8	29 3/8	29 3/8	27	27	6 1/4	4	13	2 1/2	
	8723	SURFACE MOUNTED	29 3/16	29 3/16	8 1/2	29 3/8	29 3/8	-	-	-	Upon Request			
	8625	FLAT TRIM 3/8" •	26	26	10	29 3/8	29 3/8	27	27	9 7/8	5	13	5	DUAL EXTINGUISHER & FD VALVE CABINET W/SHELF: Shelf is 12" from bottom. Any Exting. Except Sentinel 15-20, 272
	8626	1-1/4" SQUARE EDGE •	26	26	10	29 3/8	29 3/8	27	27	8 7/8	5	13	5	
	8627	2-1/2" ROLLED EDGE •	26	26	10	29 3/8	29 3/8	27	27	8 1/4	5	13	5	
	8623	SURFACE MOUNTED	29 3/16	29 3/16	10 1/2	29 3/8	29 3/8	-	-	-	Upon Request			
	8025	FLAT TRIM 3/8" •	16	40	9	19 3/8	43 3/8	17	41	8 7/8	4 1/4	6	4 1/4	DUAL EXTINGUISHER & FD VALVE CABINET W/SHELF: Shelf is 12" from bottom. Any Exting. Except Sentinel 15-20, 272
	8026	1-1/4" SQUARE EDGE •	16	40	9	19 3/8	43 3/8	17	41	7 7/8	4 1/4	6	4 1/4	
	8027	2-1/2" ROLLED EDGE •	16	40	9	19 3/8	43 3/8	17	41	7 1/4	4 1/4	6	4 1/4	
	8023	SURFACE MOUNTED	19 3/16	43 3/16	9 1/2	19 3/8	43 3/8	-	-	-	Upon Request			